

# SOM SERİSİ

ÜRÜN GRUBU



**ECO**  
FRIENDLY



**Astra Gold**  
PUMPS

“Suya Entegre Teknoloji”

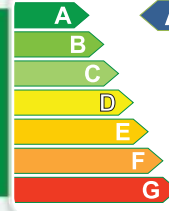






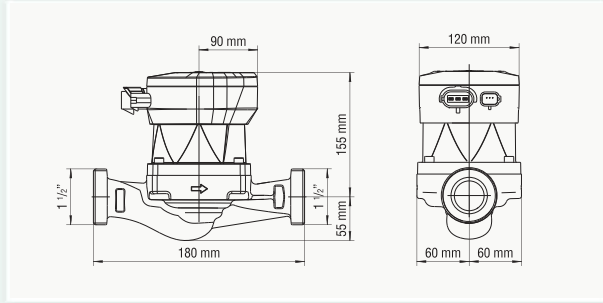


## SOM 25/80

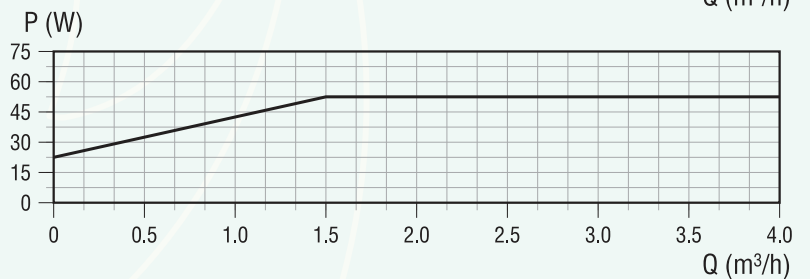
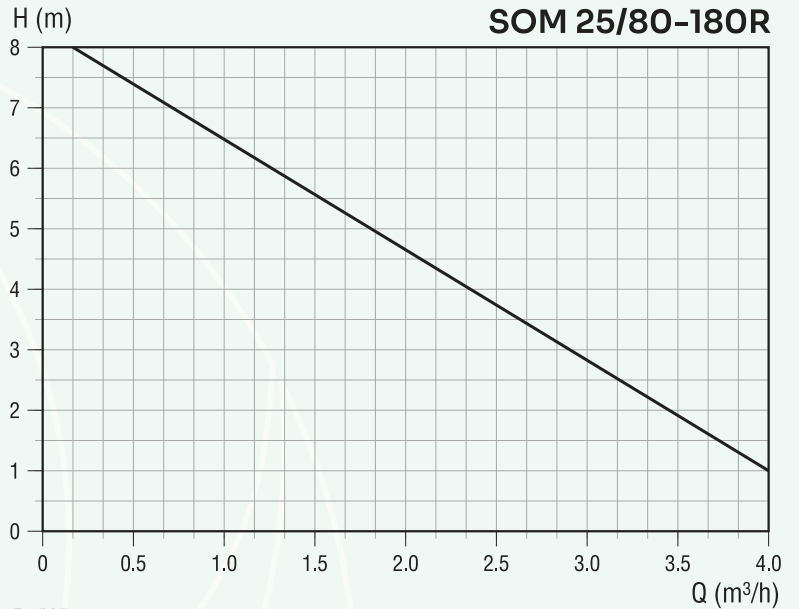
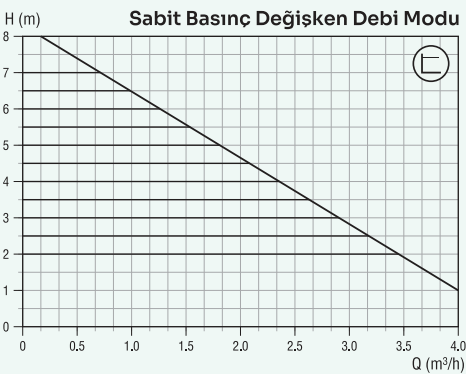
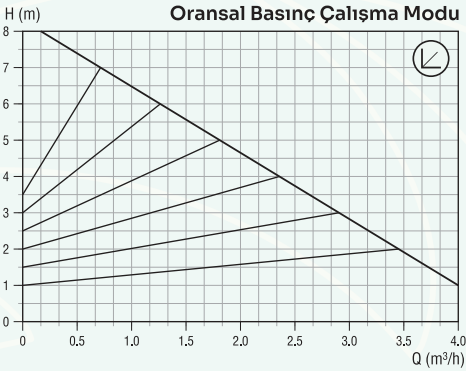


**EEL ≤ 0.21**

EN 16297-2-2013  
Part 2: Calculation  
of energy efficiency  
index (EEL) for  
standalone  
circulators.

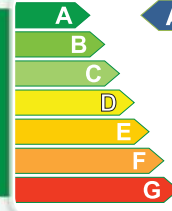


Kapasite	4 m <sup>3</sup> /h (Max)
Basma Yüksekliği	8 mss (Max)
Flanş Bağlantı Çapı	DN 25 (1 1/2")
Montaj Yüksekliği	180 mm
Akışkan Sıvı Sıcaklığı	-10 °C / +110 °C
Ortam Sıcaklığı	0 °C / +40 °C
Sıcaklık Sınıfı	TF 110 °C / TS EN 16297-1
İzolasyon Sınıfı	H (180 °C)
Koruma Seviyesi	IP 44
Motor Gücü	5 - 50 W
Elektrik Girişi	1~230V AC ±%10 50 Hz PE
Nominal Akım	0.25 A
Motor Devri	4200 rpm (Max)
Pompa Ağırlığı	1.9 kg





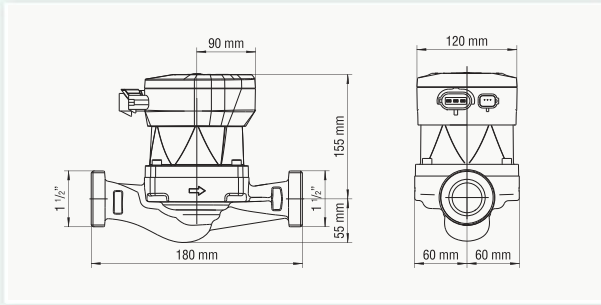
## SOM 25/80S



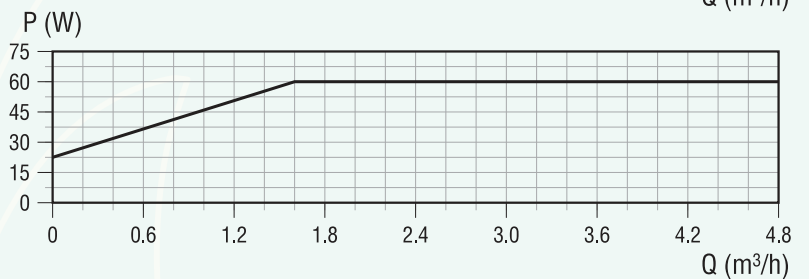
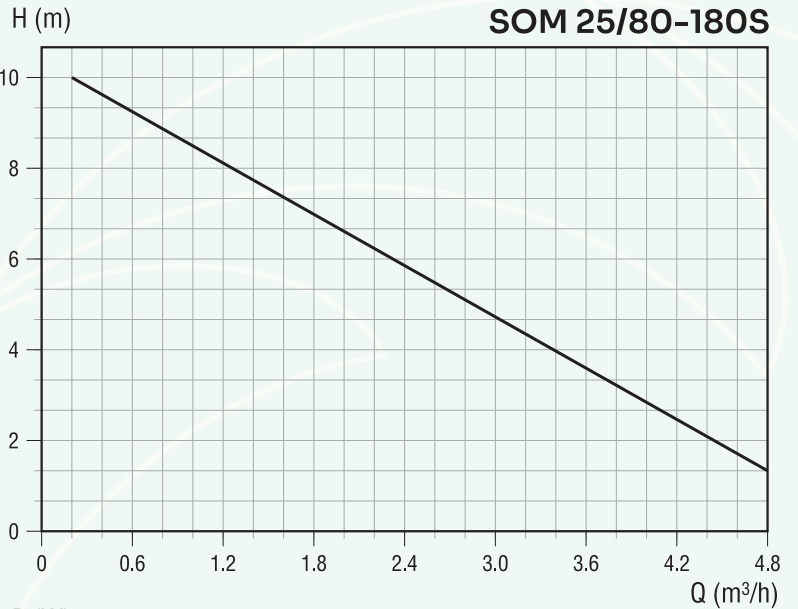
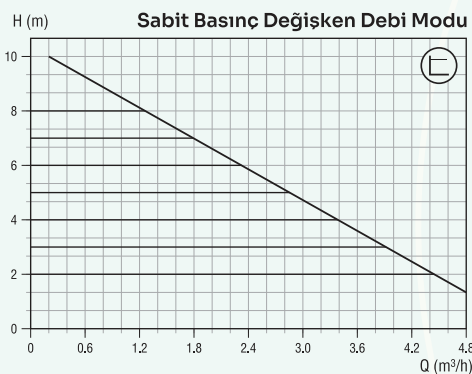
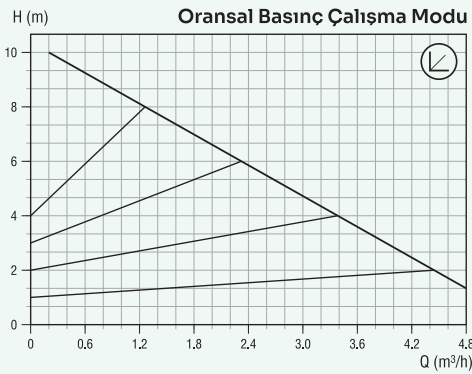
A+++

EEL ≤ 0.21

EN 16297-2-2013  
Part 2: Calculation  
of energy efficiency  
index (EEI) for  
standalone  
circulators.

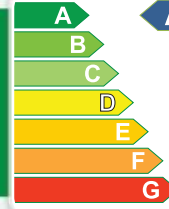


Kapasite	4.8 m <sup>3</sup> /h (Max)
Basma Yüksekliği	10 mss (Max)
Flanş Bağlantı Çapı	DN 25 (1 1/2")
Montaj Yüksekliği	180 mm
Akışkan Sıvı Sıcaklığı	-10 °C / +110 °C
Ortam Sıcaklığı	0 °C / +40 °C
Sıcaklık Sınıfı	TF 110 °C / TS EN 16297-1
İzolasyon Sınıfı	H (180 °C)
Koruma Seviyesi	IP 44
Motor Gücü	5 - 60 W
Elektrik Girişi	1~230V AC ±%10 50 Hz PE
Nominal Akım	0.30 A
Motor Devri	4700 rpm (Max)
Pompa Ağırlığı	1.9 kg



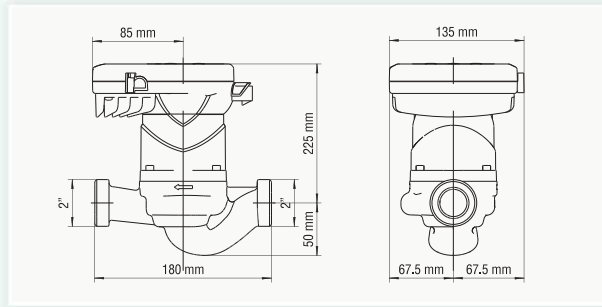


## SOM 32/80

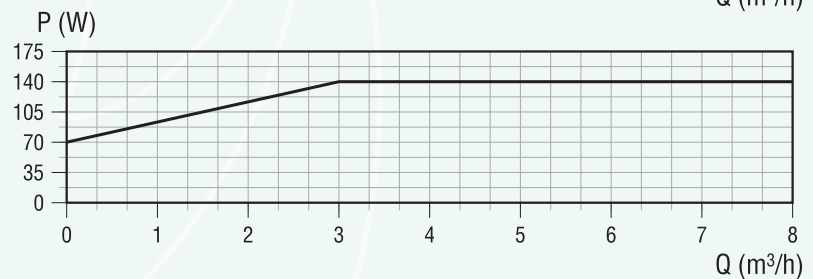
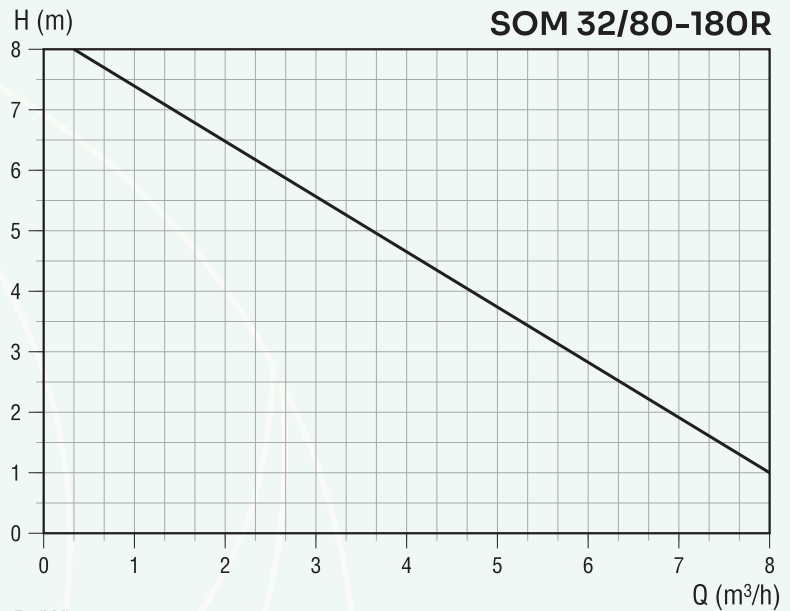
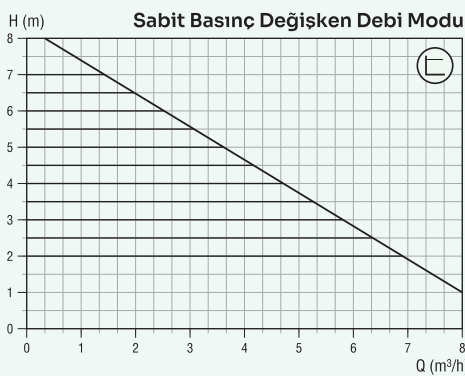
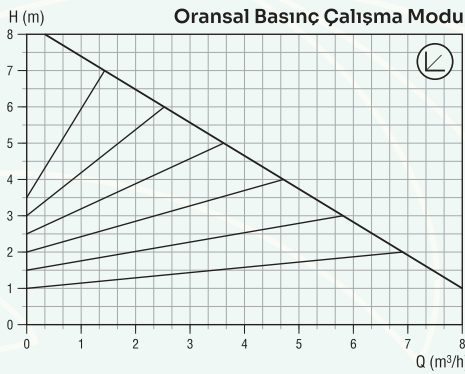


**EEL ≤ 0.21**

EN 16297-2-2013  
Part 2: Calculation  
of energy efficiency  
index (EEL) for  
standalone  
circulators.

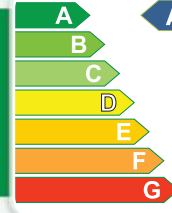


Kapasite	8 m <sup>3</sup> /h (Max)
Basma Yüksekliği	8 mss (Max)
Flaş Bağlantı Çapı	DN 32 (2")
Montaj Yüksekliği	180 mm
Akışkan Sıvı Sıcaklığı	-10 °C / +110 °C
Ortam Sıcaklığı	0 °C / +40 °C
Sıcaklık Sınıfı	TF 110 °C / TS EN 16297-1
İzolasyon Sınıfı	H (180 °C)
Koruma Seviyesi	IP 44
Motor Gücü	10 - 140 W
Elektrik Girişi	1~230V AC ±%10 50 Hz PE
Nominal Akım	0.60 A
Motor Devri	3650 rpm (Max)
Pompa Ağırlığı	2.7 kg





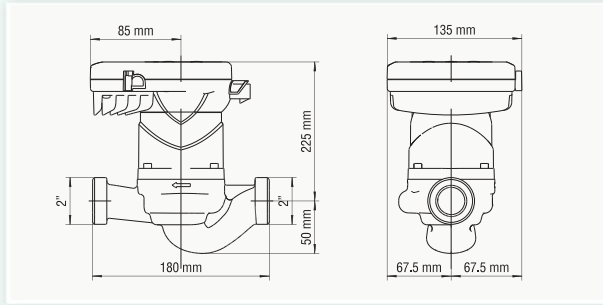
# SOM 32/100



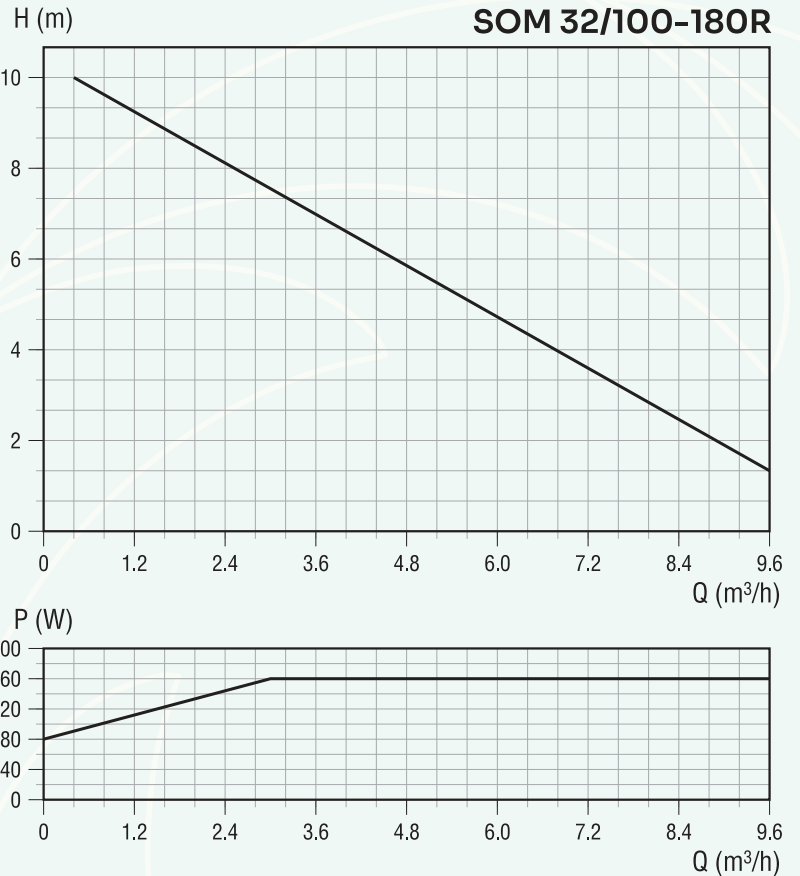
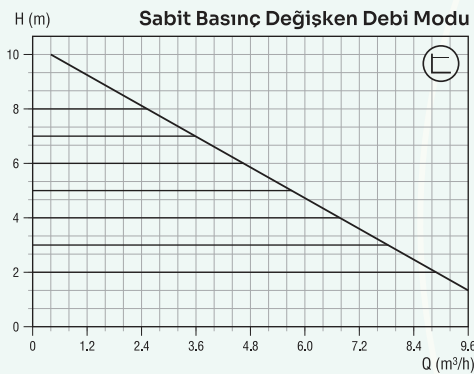
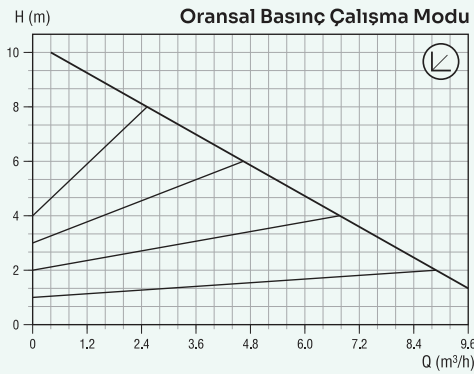
A+++

EEL ≤ 0.21

EN 16297-2-2013  
Part 2: Calculation  
of energy efficiency  
index (EEI) for  
standalone  
circulators.

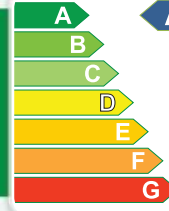


Kapasite	9.6 m <sup>3</sup> /h (Max)
Basma Yüksekliği	10 mss (Max)
Flanş Bağlantı Çapı	DN 32 (2")
Montaj Yüksekliği	180 mm
Akışkan Sıvı Sıcaklığı	-10 °C / +110 °C
Ortam Sıcaklığı	0 °C / +40 °C
Sıcaklık Sınıfı	TF 110 °C / TS EN 16297-1
İzolasyon Sınıfı	H (180 °C)
Koruma Seviyesi	IP 44
Motor Gücü	10 - 160 W
Elektrik Girişi	1~230V AC ±%10 50 Hz PE
Nominal Akım	0.70 A
Motor Devri	3900 rpm (Max)
Pompa Ağırlığı	2.7 kg



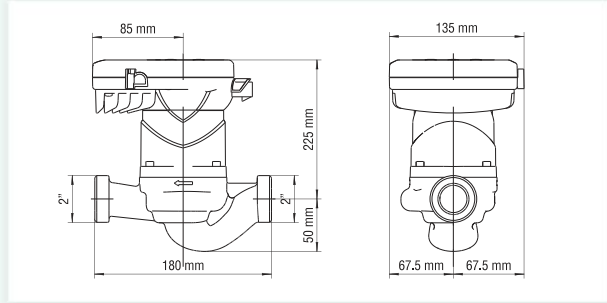


## SOM 32/120

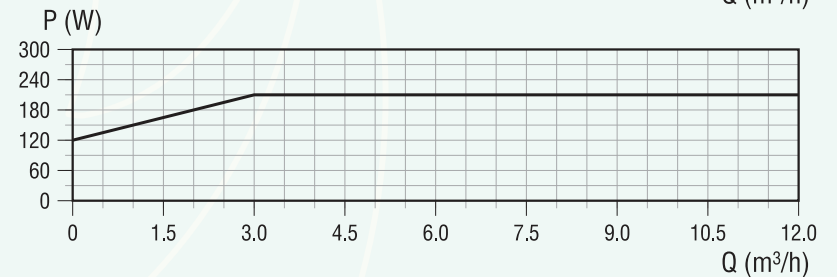
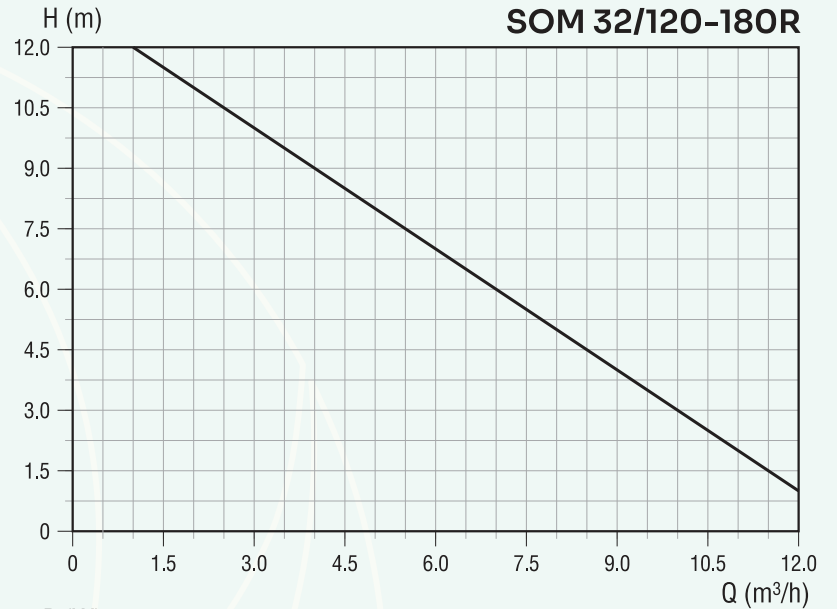
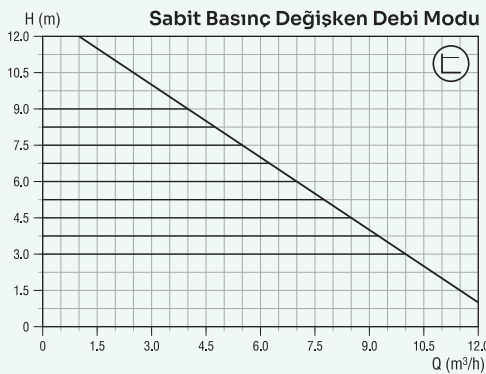
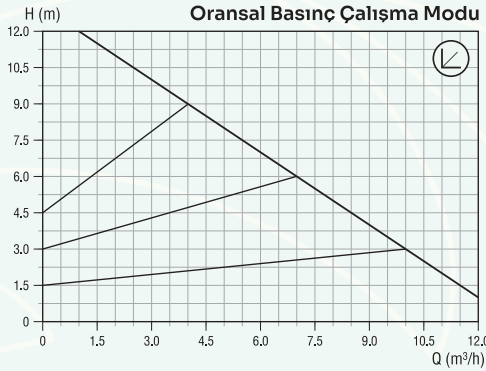


**EEL ≤ 0.21**

EN 16297-2-2013  
Part 2: Calculation  
of energy efficiency  
index (EEL) for  
standalone  
circulators.

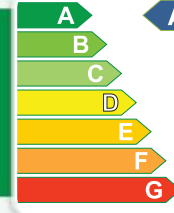


Kapasite	12 m <sup>3</sup> /h (Max)
Basma Yüksekliği	12 mss (Max)
Flanş Bağlantı Çapı	DN 32 (2")
Montaj Yüksekliği	180 mm
Akışkan Sıvı Sıcaklığı	-10 °C / +110 °C
Ortam Sıcaklığı	0 °C / +40 °C
Sıcaklık Sınıfı	TF 110 °C / TS EN 16297-1
İzolasyon Sınıfı	H (180 °C)
Koruma Seviyesi	IP 44
Motor Gücü	10 - 210 W
Elektrik Girişi	1~230V AC ±%10 50 Hz PE
Nominal Akım	0.90 A
Motor Devri	4300 rpm (Max)
Pompa Ağırlığı	2.8 kg





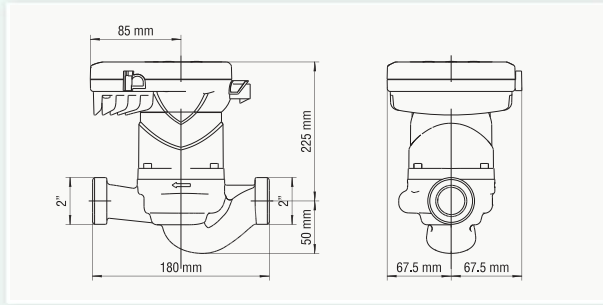
## SOM 32/120S



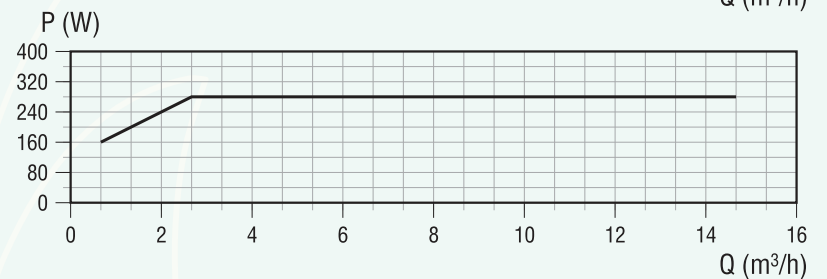
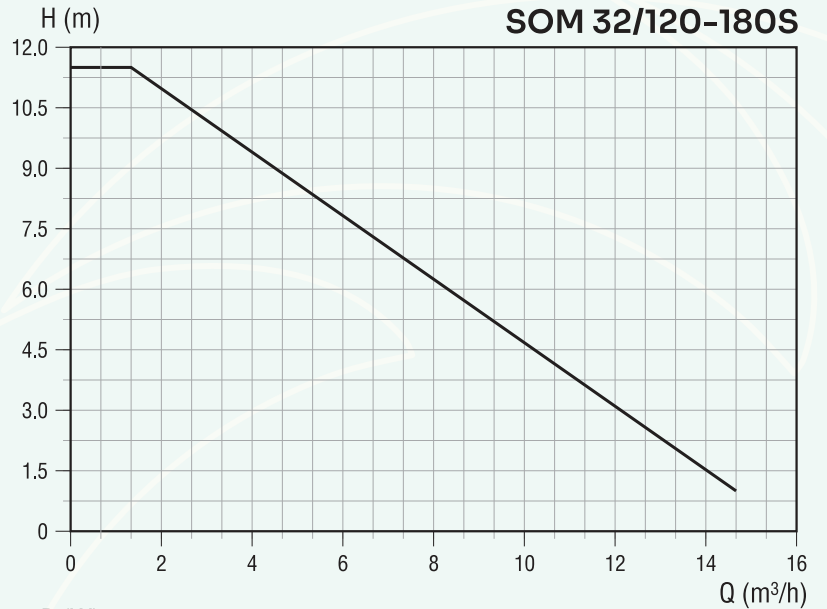
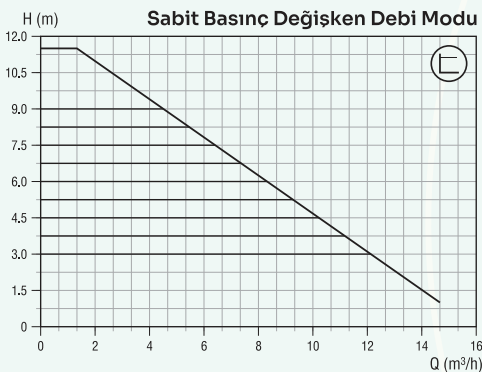
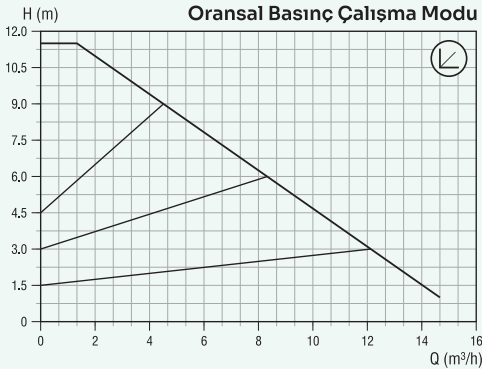
A+++

EEL ≤ 0.21

EN 16297-2-2013  
Part 2: Calculation  
of energy efficiency  
index (EEI) for  
standalone  
circulators.

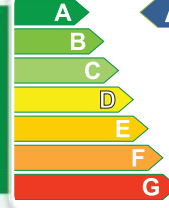


Kapasite	15 m <sup>3</sup> /h (Max)
Basma Yüksekliği	11.8 mss (Max)
Flanş Bağlantı Çapı	DN 32 (2")
Montaj Yüksekliği	180 mm
Akışkan Sıvı Sıcaklığı	-10 °C / +110 °C
Ortam Sıcaklığı	0 °C / +40 °C
Sıcaklık Sınıfı	TF 110 °C / TS EN 16297-1
İzolasyon Sınıfı	H (180 °C)
Koruma Seviyesi	IP 44
Motor Gücü	15 - 250 W
Elektrik Girişi	1~230V AC ±%10 50 Hz PE
Nominal Akım	1.10 A
Motor Devri	4200 rpm (Max)
Pompa Ağırlığı	2.8 kg



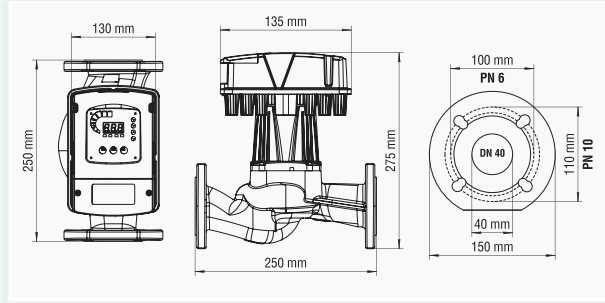


# SOM 40/120S

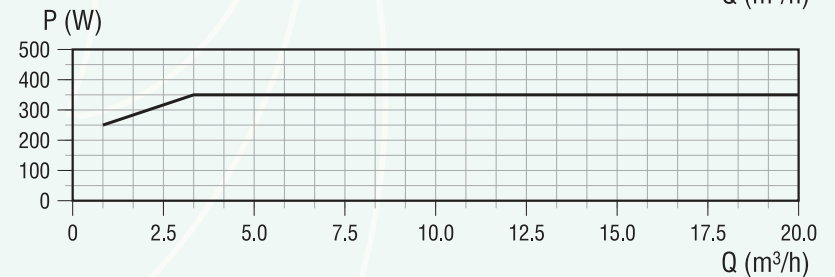
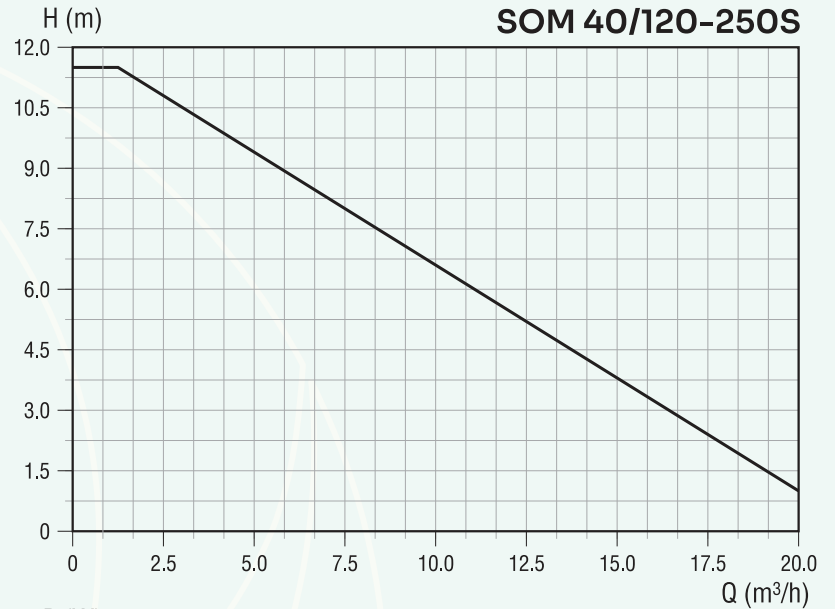
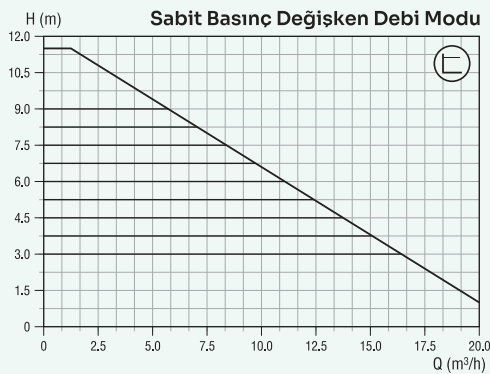
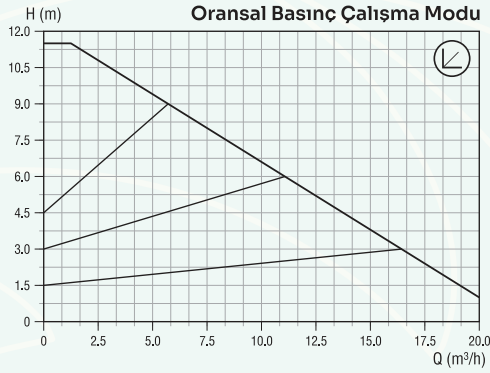


**EEL ≤ 0.21**

EN 16297-2-2013  
Part 2: Calculation  
of energy efficiency  
index (EEI) for  
standalone  
circulators.

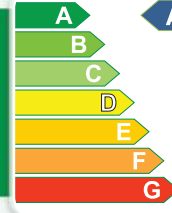


Kapasite	20 m <sup>3</sup> /h (Max)
Basma Yüksekliği	12 mss (Max)
Flaş Bağlantı Çapı	DN 40 - PN 6/10 Uyumlu
Montaj Yüksekliği	250 mm
Akışkan Sıvı Sıcaklığı	-10 °C / +110 °C
Ortam Sıcaklığı	0 °C / +40 °C
Sıcaklık Sınıfı	TF 110 °C / TS EN 16297-1
İzolasyon Sınıfı	H (180 °C)
Koruma Seviyesi	IP 44
Motor Gücü	30 - 350 W
Elektrik Girişi	1~230V AC ±%10 50 Hz PE
Nominal Akım	1.50 A
Motor Devri	4200 rpm (Max)
Pompa Ağırlığı	13.5 kg





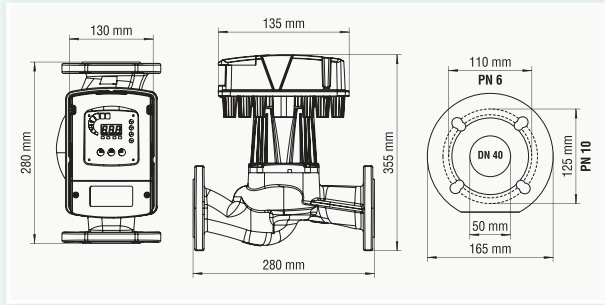
## SOM 50/120S



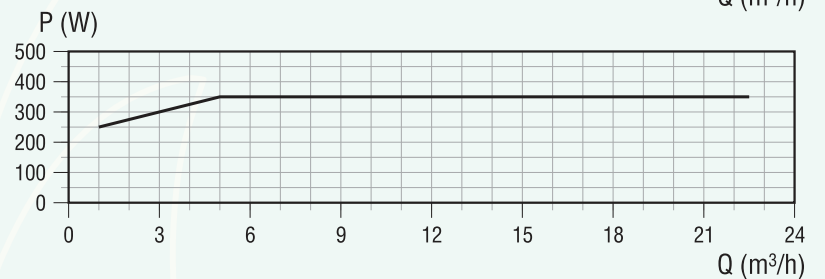
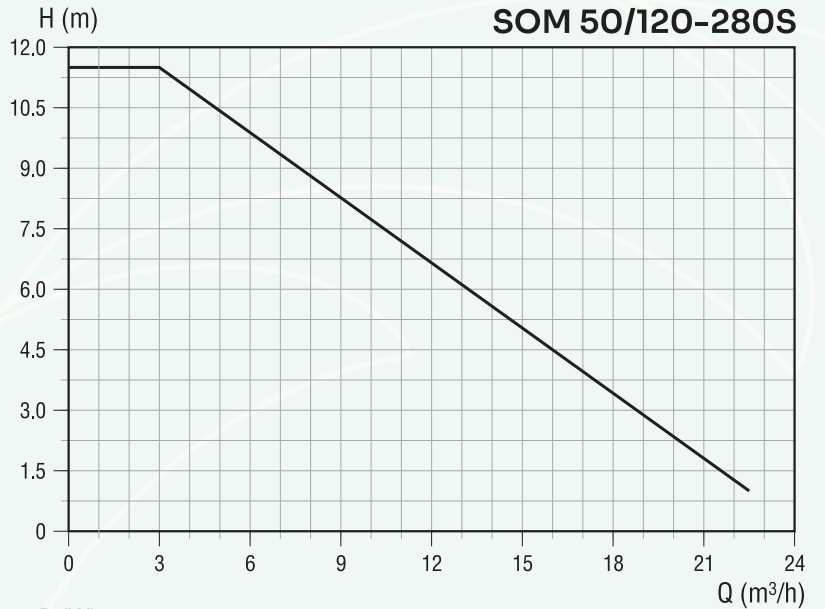
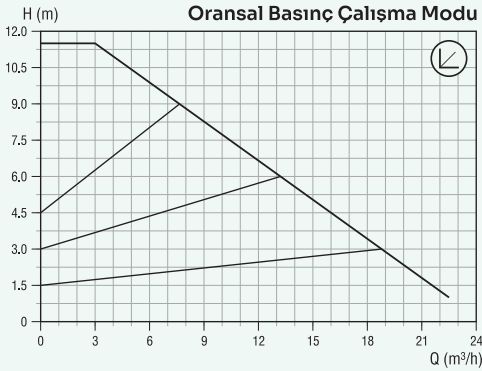
A+++

EEl ≤ 0.21

EN 16297-2-2013  
Part 2: Calculation  
of energy efficiency  
index (EEl) for  
standalone  
circulators.

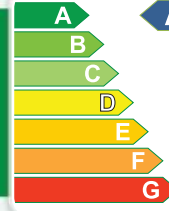


Kapasite	22 m <sup>3</sup> /h (Max)
Basma Yüksekliği	12 mss (Max)
Flanş Bağlantı Çapı	DN 40 - PN 6/10 Uyumlu
Montaj Yüksekliği	280 mm
Akışkan Sıvı Sıcaklığı	-10 °C / +110 °C
Ortam Sıcaklığı	0 °C / +40 °C
Sıcaklık Sınıfı	TF 110 °C / TS EN 16297-1
İzolasyon Sınıfı	H (180 °C)
Koruma Seviyesi	IP 44
Motor Gücü	30 - 350 W
Elektrik Girişi	1~230V AC ±%10 50 Hz PE
Nominal Akım	1.50 A
Motor Devri	4200 rpm (Max)
Pompa Ağırlığı	15 kg





## SOM 40/80

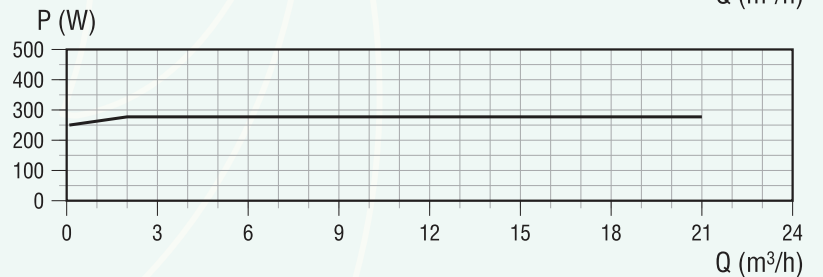
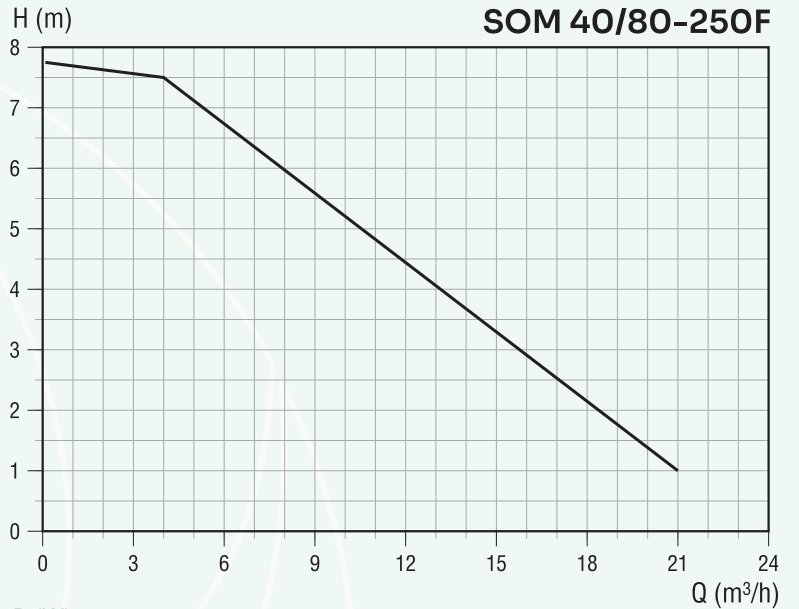
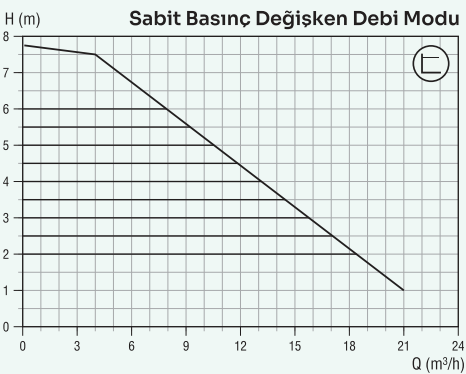
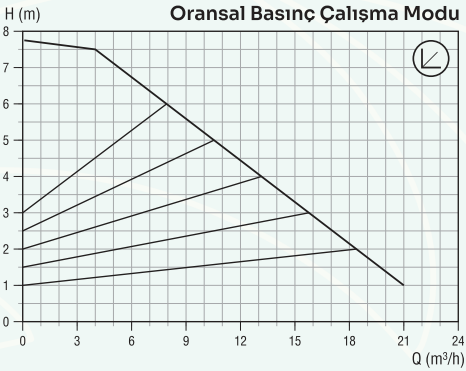
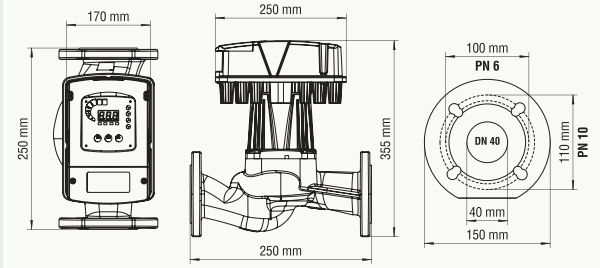


**EEL ≤ 0.21**

EN 16297-2-2013  
Part 2: Calculation  
of energy efficiency  
index (EEL) for  
standalone  
circulators.

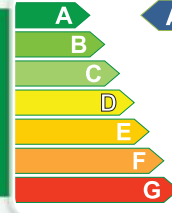


Kapasite	21 m <sup>3</sup> /h (Max)
Basma Yüksekliği	8 mss (Max)
Flaş Bağlantı Çapı	DN 40 - PN 6/10 Uyumlu
Montaj Yüksekliği	250 mm
Akışkan Sıvı Sıcaklığı	-10 °C / +110 °C
Ortam Sıcaklığı	0 °C / +40 °C
Sıcaklık Sınıfı	TF 110 °C / TS EN 16297-1
İzolasyon Sınıfı	H (180 °C)
Koruma Seviyesi	IP 44
Motor Gücü	33 - 280 W
Elektrik Girişi	1~230V AC ±%10 50 Hz PE
Nominal Akım	1.25 A
Motor Devri	3450 rpm (Max)
Pompa Ağırlığı	14 kg





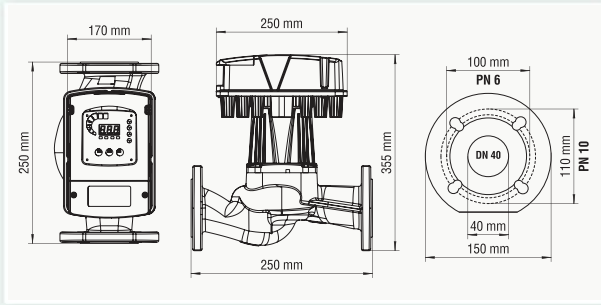
## SOM 40/120



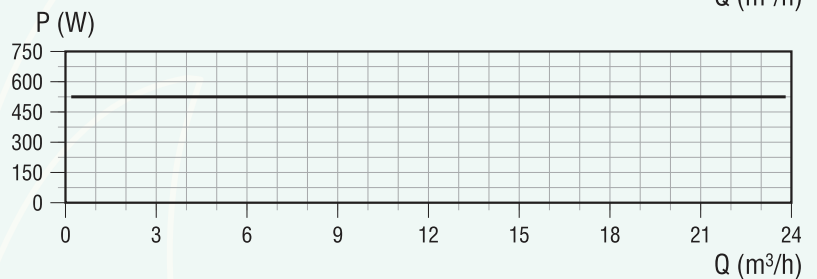
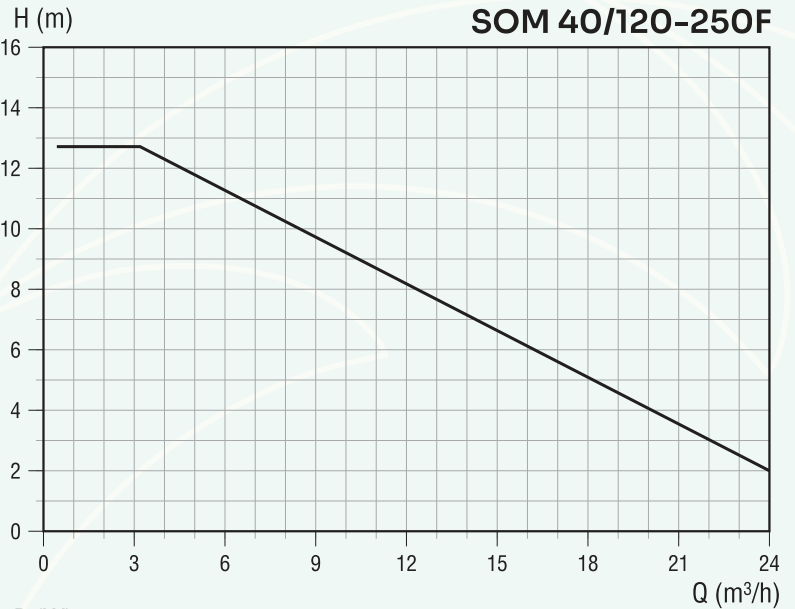
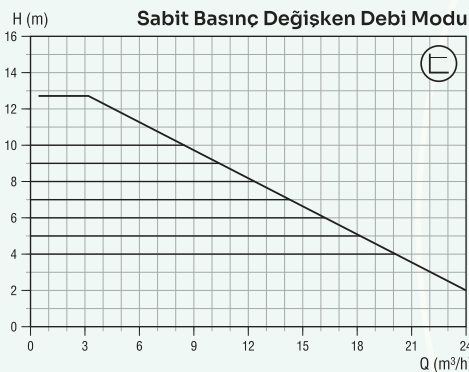
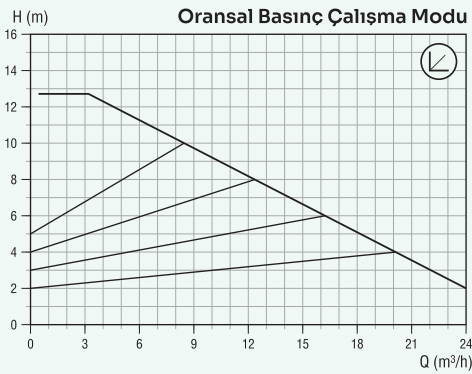
A+++

EEl ≤ 0.21

EN 16297-2-2013  
Part 2: Calculation  
of energy efficiency  
index (EEl) for  
standalone  
circulators.

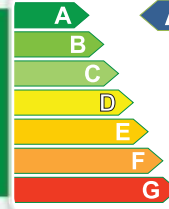


Kapasite	25 m <sup>3</sup> /h (Max)
Basma Yüksekliği	12.2 mss (Max)
Flanş Bağlantı Çapı	DN 40 - PN 6/10 Uyumlu
Montaj Yüksekliği	250 mm
Akışkan Sıvı Sıcaklığı	-10 °C / +110 °C
Ortam Sıcaklığı	0 °C / +40 °C
Sıcaklık Sınıfı	TF 110 °C / TS EN 16297-1
İzolasyon Sınıfı	H (180 °C)
Koruma Seviyesi	IP 44
Motor Gücü	33 - 500 W
Elektrik Girişi	1~230V AC ±%10 50 Hz PE
Nominal Akım	2.20 A
Motor Devri	4200 rpm (Max)
Pompa Ağırlığı	14 kg





# SOM 40/180

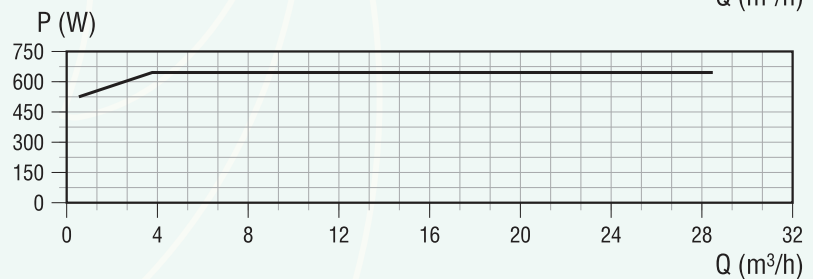
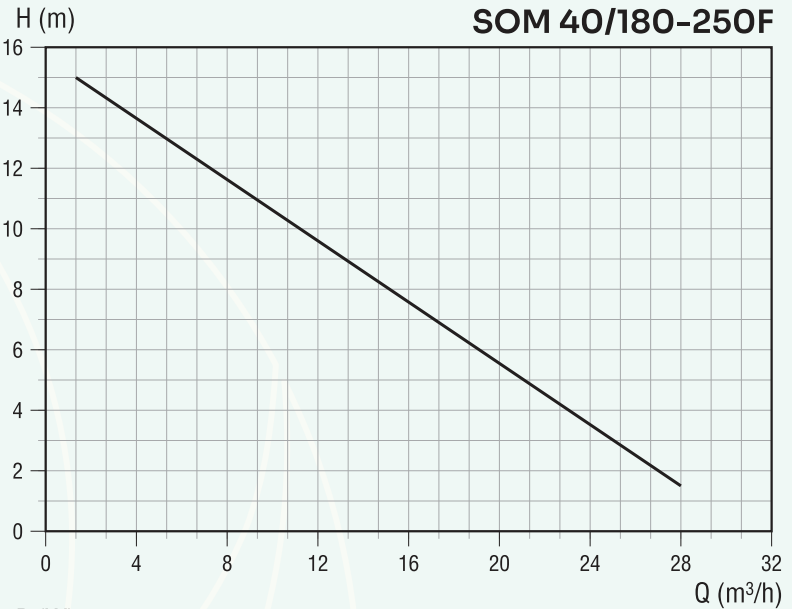
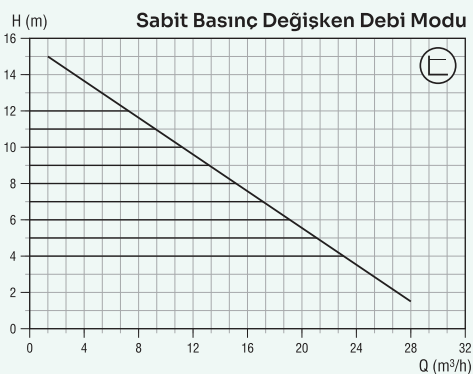
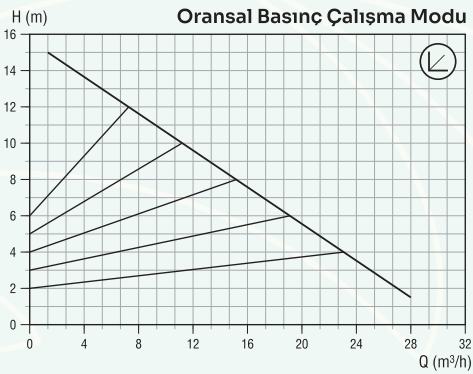
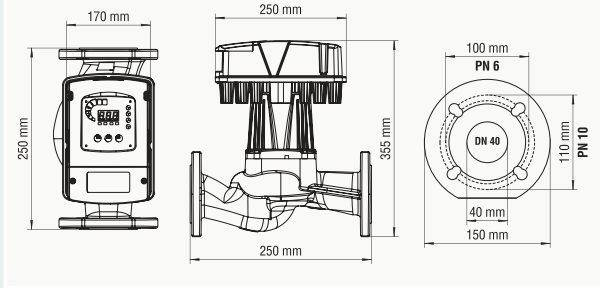


**EEL ≤ 0.20**

EN 16297-2-2013  
Part 2: Calculation  
of energy efficiency  
index (EEI) for  
standalone  
circulators.

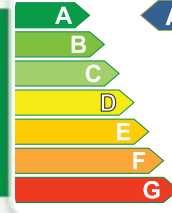


Kapasite	28 m <sup>3</sup> /h (Max)
Basma Yüksekliği	16 mss (Max)
Flaş Bağlantı Çapı	DN 40 - PN 6/10 Uyumlu
Montaj Yüksekliği	250 mm
Akışkan Sıvı Sıcaklığı	-10 °C / +110 °C
Ortam Sıcaklığı	0 °C / +40 °C
Sıcaklık Sınıfı	TF 110 °C / TS EN 16297-1
İzolasyon Sınıfı	H (180 °C)
Koruma Seviyesi	IP 44
Motor Gücü	33 - 620 W
Elektrik Girişi	1~230V AC ±%10 50 Hz PE
Nominal Akım	2.70 A
Motor Devri	4950 rpm (Max)
Pompa Ağırlığı	14 kg





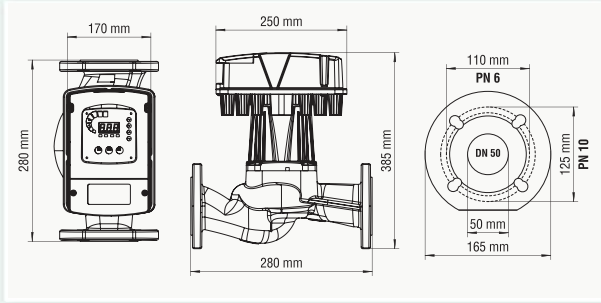
# SOM 50/80



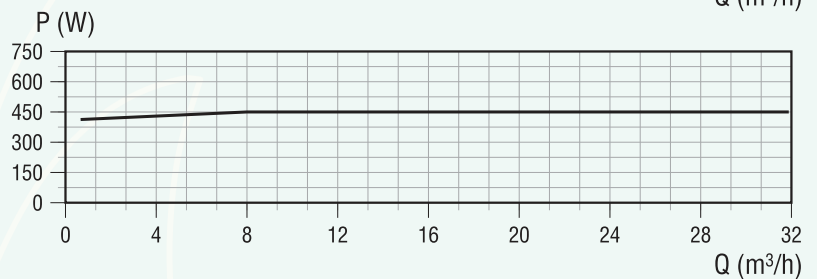
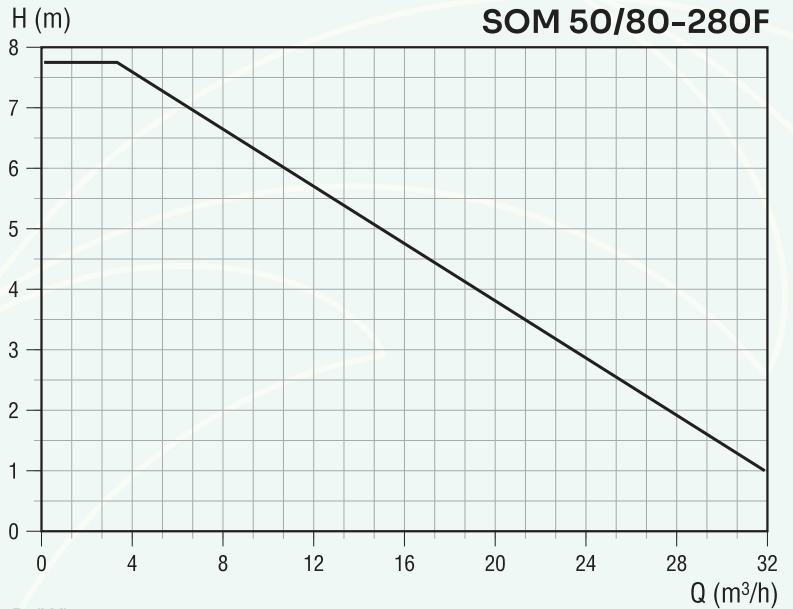
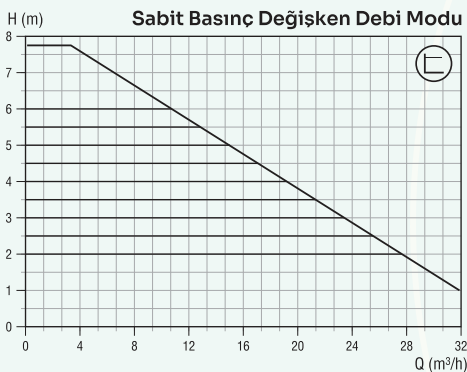
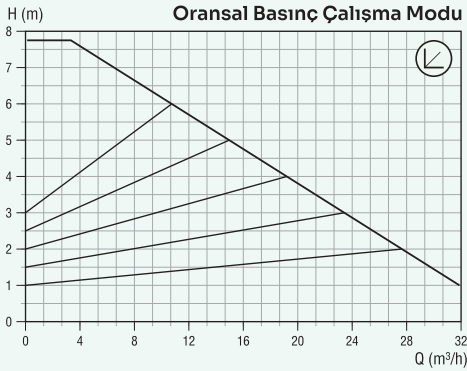
A+++

EEL ≤ 0.20

EN 16297-2-2013  
Part 2: Calculation  
of energy efficiency  
index (EEI) for  
standalone  
circulators.

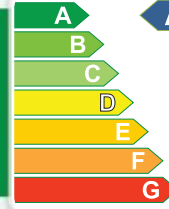


Kapasite	32 m <sup>3</sup> /h (Max)
Basma Yüksekliği	8 mss (Max)
Flaş Bağlantı Çapı	DN 50 - PN 6/10 Uyumlu
Montaj Yüksekliği	280 mm
Akışkan Sıvı Sıcaklığı	-10 °C / +110 °C
Ortam Sıcaklığı	0 °C / +40 °C
Sıcaklık Sınıfı	TF 110 °C / TS EN 16297-1
İzolasyon Sınıfı	H (180 °C)
Koruma Seviyesi	IP 44
Motor Gücü	33 - 425 W
Elektrik Girişi	1~230V AC ±%10 50 Hz PE
Nominal Akım	1.85 A
Motor Devri	3450 rpm (Max)
Pompa Ağırlığı	15.5 kg





# SOM 50/120

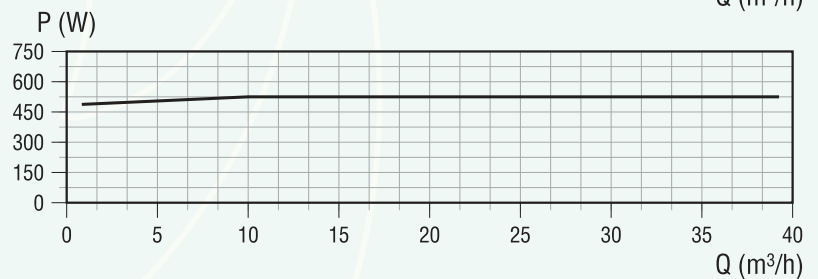
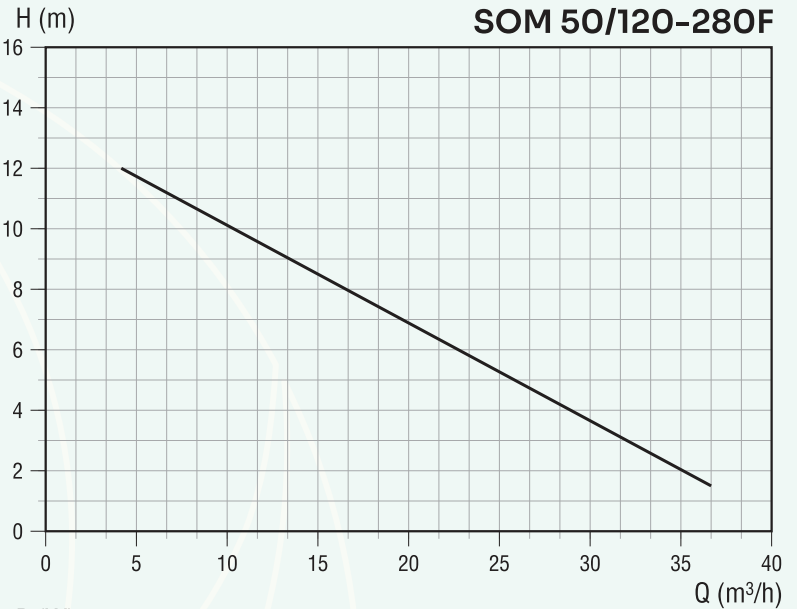
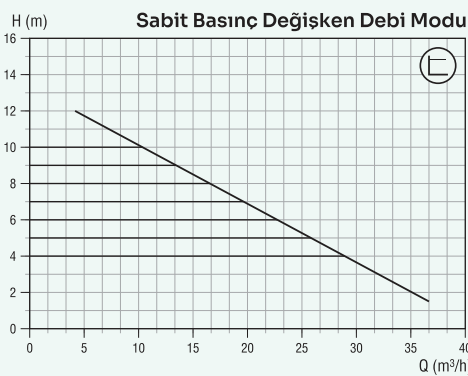
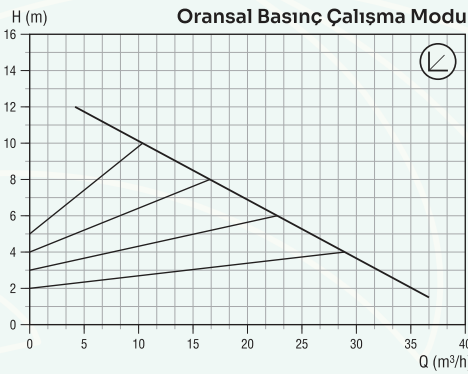
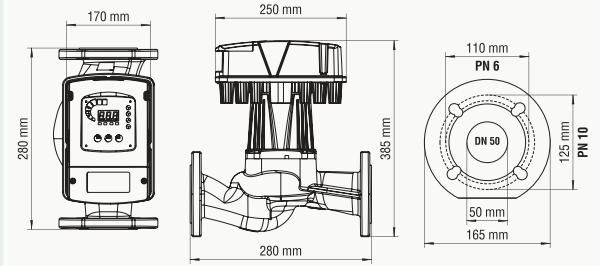


**EEL ≤ 0.20**

EN 16297-2-2013  
Part 2: Calculation  
of energy efficiency  
index (EEI) for  
standalone  
circulators.

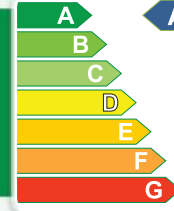


Kapasite	36 m <sup>3</sup> /h (Max)
Basma Yüksekliği	12 mss (Max)
Flaş Bağlantı Çapı	DN 50 - PN 6/10 Uyumlu
Montaj Yüksekliği	280 mm
Akışkan Sıvı Sıcaklığı	-10 °C / +110 °C
Ortam Sıcaklığı	0 °C / +40 °C
Sıcaklık Sınıfı	TF 110 °C / TS EN 16297-1
İzolasyon Sınıfı	H (180 °C)
Koruma Seviyesi	IP 44
Motor Gücü	33 - 530 W
Elektrik Girişi	1~230V AC ±%10 50 Hz PE
Nominal Akım	2.30 A
Motor Devri	4200 rpm (Max)
Pompa Ağırlığı	15.5 kg





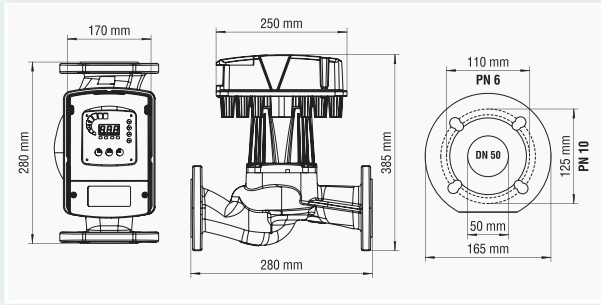
## SOM 50/130



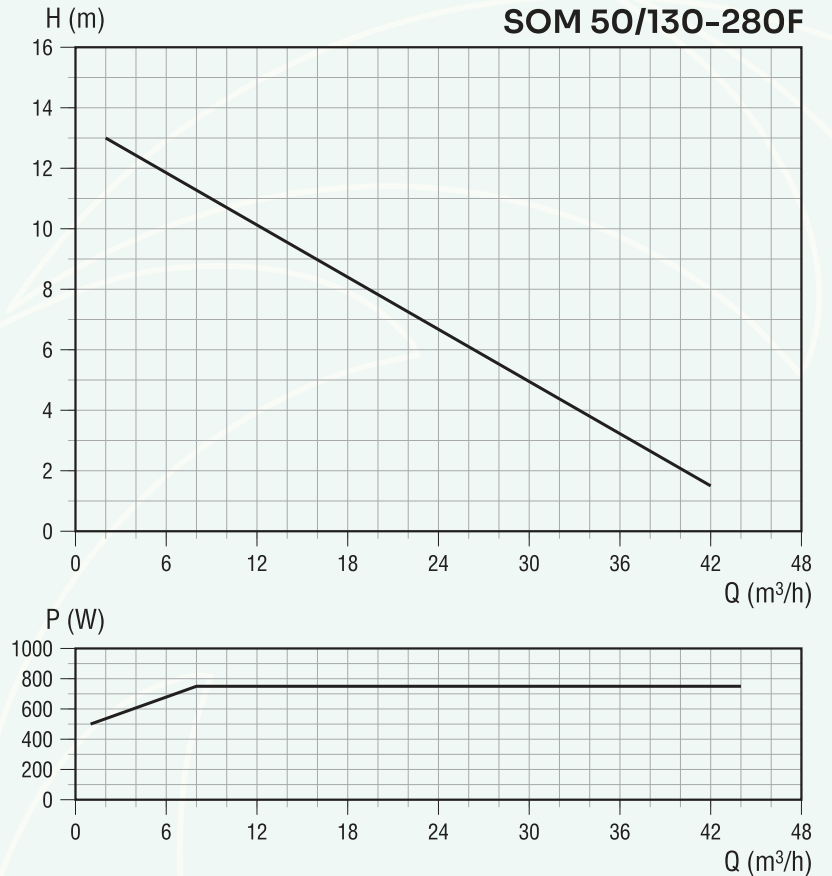
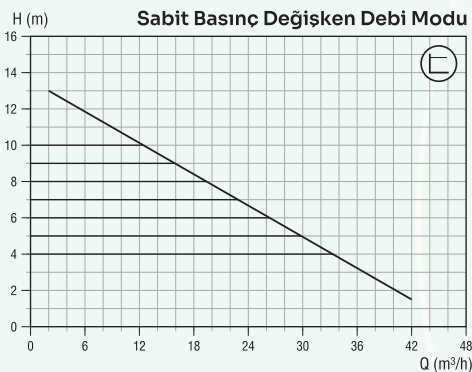
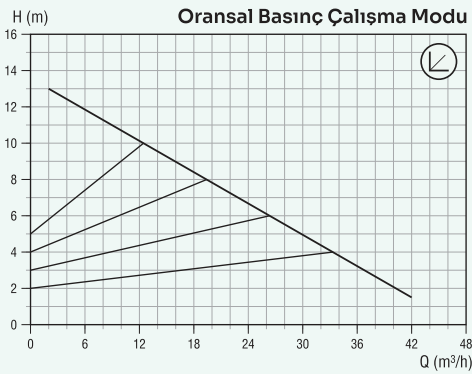
A+++

EEL ≤ 0.20

EN 16297-2-2013  
Part 2: Calculation  
of energy efficiency  
index (EEI) for  
standalone  
circulators.

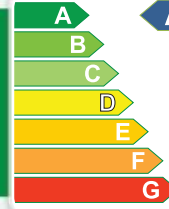


Kapasite	42 m <sup>3</sup> /h (Max)
Basma Yüksekliği	12.7 mss (Max)
Flaş Bağlantı Çapı	DN 50 - PN 6/10 Uyumlu
Montaj Yüksekliği	280 mm
Akışkan Sıvı Sıcaklığı	-10 °C / +110 °C
Ortam Sıcaklığı	0 °C / +40 °C
Sıcaklık Sınıfı	TF 110 °C / TS EN 16297-1
İzolasyon Sınıfı	H (180 °C)
Koruma Seviyesi	IP 44
Motor Gücü	33 - 750 W
Elektrik Girişi	1~230V AC ±%10 50 Hz PE
Nominal Akım	3.26 A
Motor Devri	4200 rpm (Max)
Pompa Ağırlığı	15.5 kg





# SOM 50/180

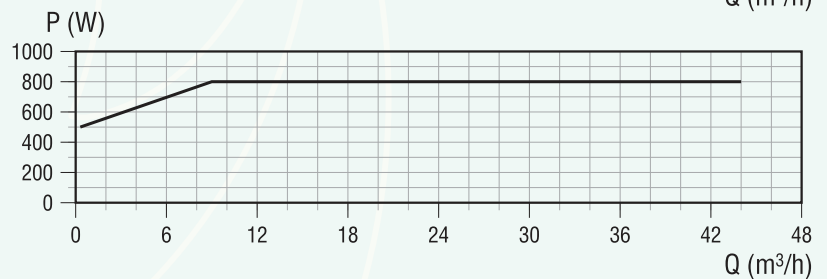
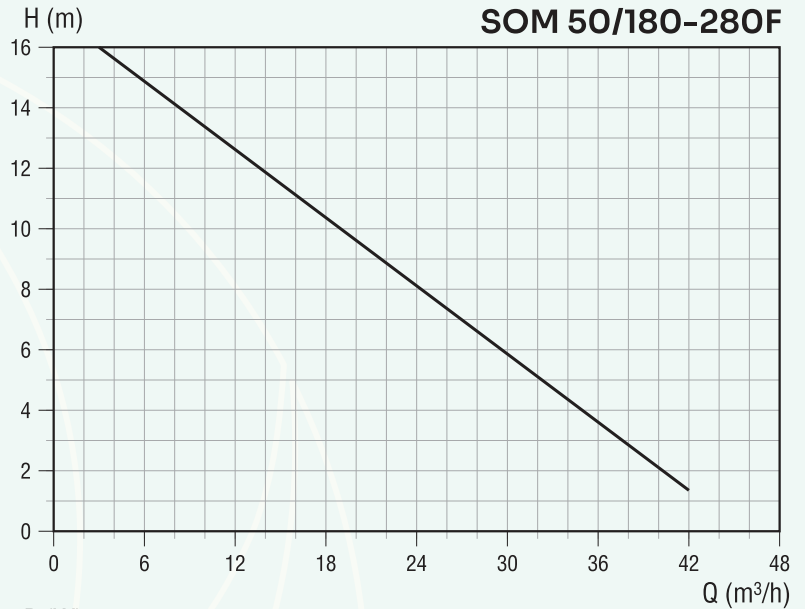
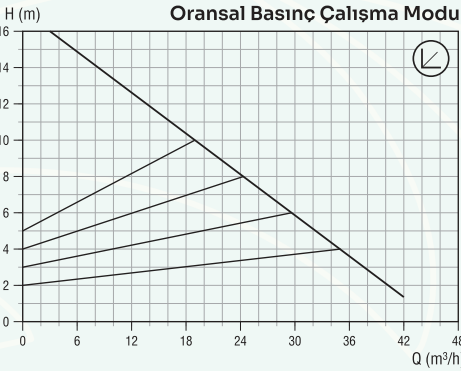
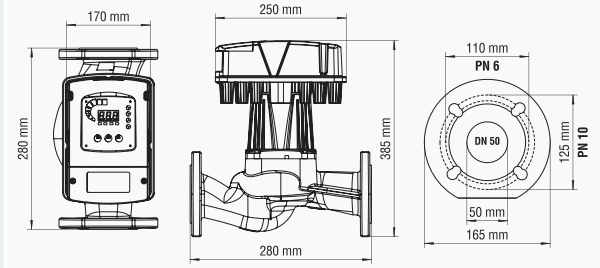


**EEL ≤ 0.20**

EN 16297-2-2013  
Part 2: Calculation  
of energy efficiency  
index (EEI) for  
standalone  
circulators.

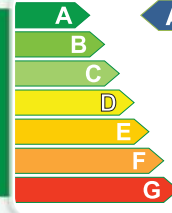


Kapasite	42 m <sup>3</sup> /h (Max)
Basma Yüksekliği	16 mss (Max)
Flaş Bağlantı Çapı	DN 50 - PN 6/10 Uyumlu
Montaj Yüksekliği	280 mm
Akışkan Sıvı Sıcaklığı	-10 °C / +110 °C
Ortam Sıcaklığı	0 °C / +40 °C
Sıcaklık Sınıfı	TF 110 °C / TS EN 16297-1
İzolasyon Sınıfı	H (180 °C)
Koruma Seviyesi	IP 44
Motor Gücü	33 - 800 W
Elektrik Girişi	1~230V AC ±%10 50 Hz PE
Nominal Akım	3.50 A
Motor Devri	4950 rpm (Max)
Pompa Ağırlığı	16.5 kg





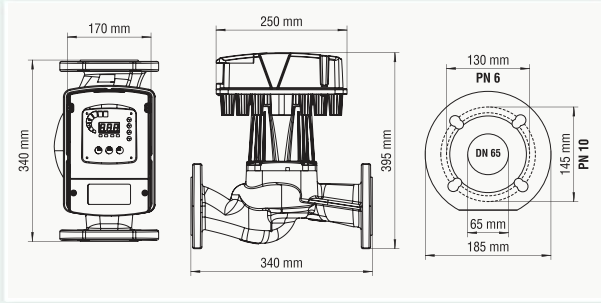
## SOM 65/80



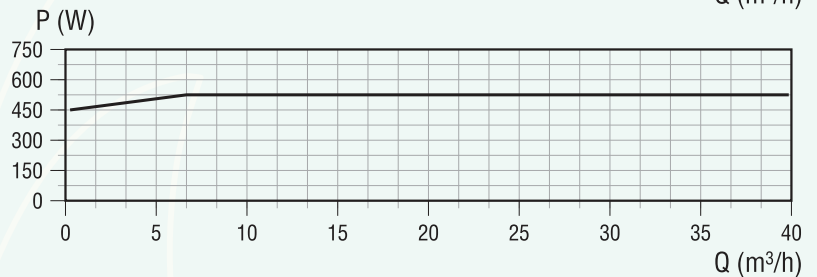
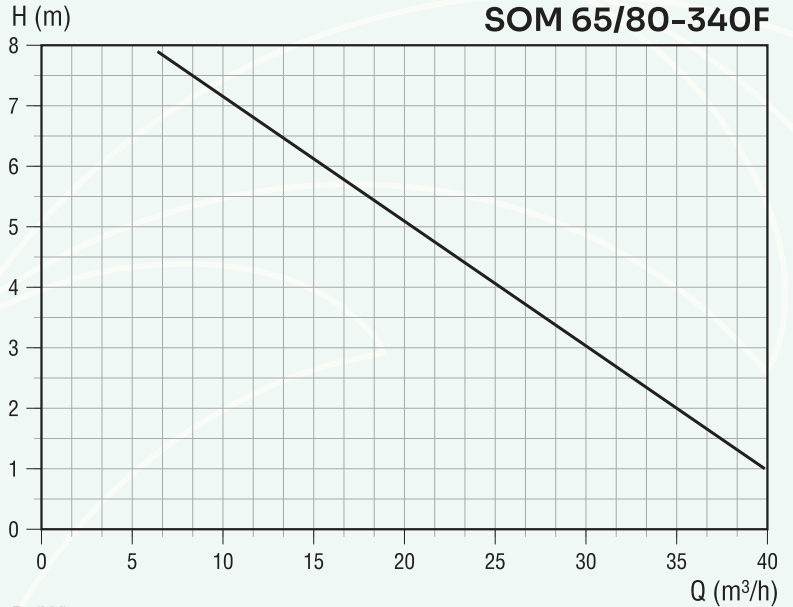
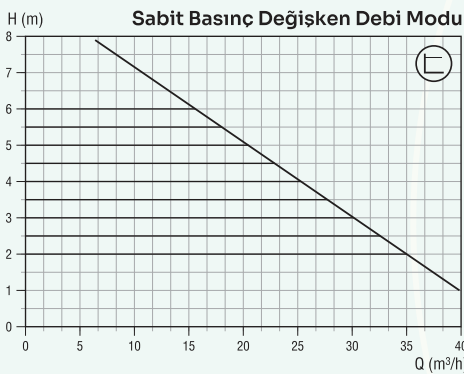
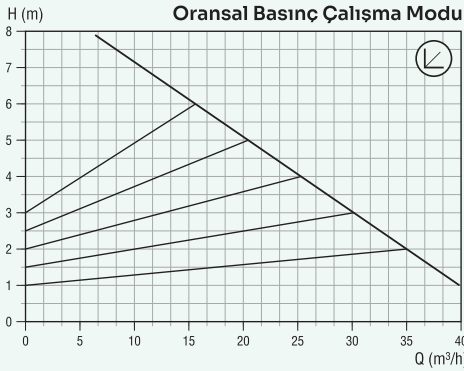
A+++

EI ≤ 0.20

EN 16297-2-2013  
Part 2: Calculation  
of energy efficiency  
index (EEI) for  
standalone  
circulators.

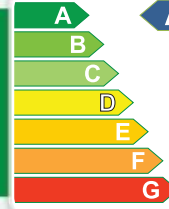


Kapasite	42 m <sup>3</sup> /h (Max)
Basma Yüksekliği	8.2 mss (Max)
Flaş Bağlantı Çapı	DN 65 - PN 6/10 Uyumlu
Montaj Yüksekliği	340 mm
Akışkan Sıvı Sıcaklığı	-10 °C / +110 °C
Ortam Sıcaklığı	0 °C / +40 °C
Sıcaklık Sınıfı	TF 110 °C / TS EN 16297-1
İzolasyon Sınıfı	H (180 °C)
Koruma Seviyesi	IP 44
Motor Gücü	33 - 510 W
Elektrik Girişi	1~230V AC ±%10 50 Hz PE
Nominal Akım	2.20 A
Motor Devri	3400 rpm (Max)
Pompa Ağırlığı	19 kg





# SOM 65/120

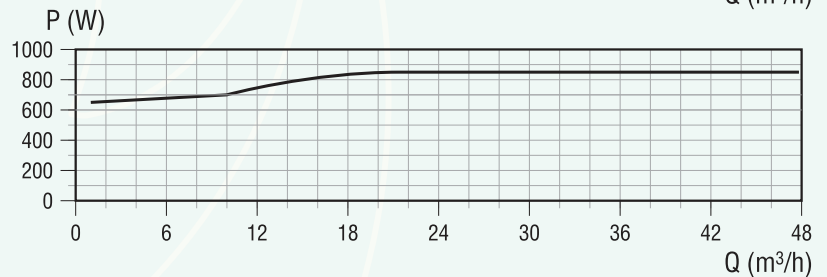
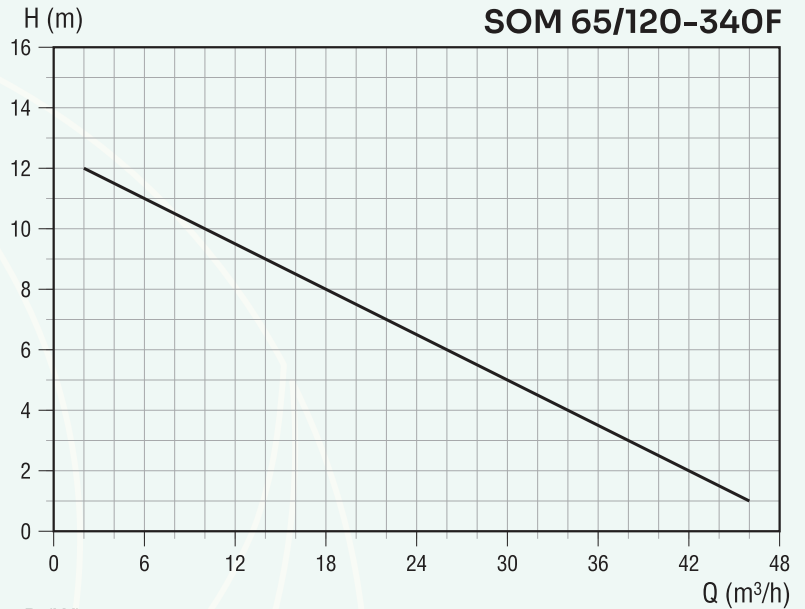
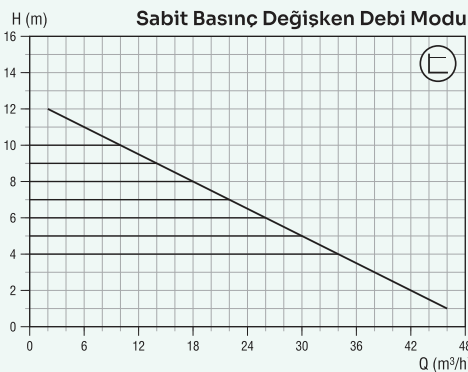
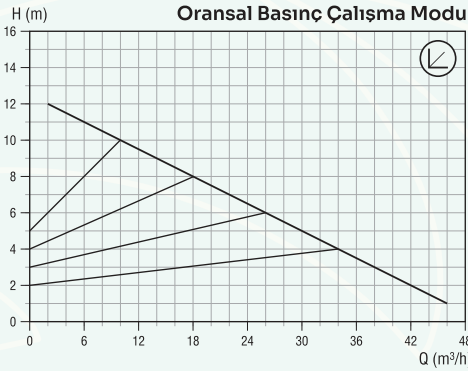
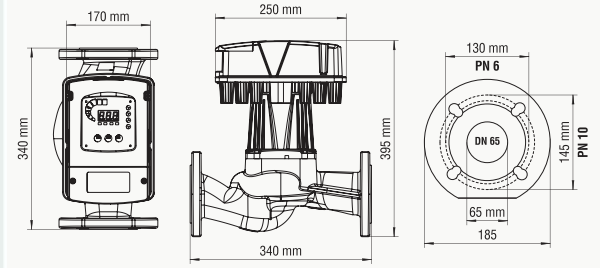


**EEL ≤ 0.20**

EN 16297-2-2013  
Part 2: Calculation  
of energy efficiency  
index (EEI) for  
standalone  
circulators.

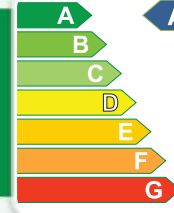


Kapasite	47 m <sup>3</sup> /h (Max)
Basma Yüksekliği	12.2 mss (Max)
Flaş Bağlantı Çapı	DN 65 - PN 6/10 Uyumlu
Montaj Yüksekliği	340 mm
Akışkan Sıvı Sıcaklığı	-10 °C / +110 °C
Ortam Sıcaklığı	0 °C / +40 °C
Sıcaklık Sınıfı	TF 110 °C / TS EN 16297-1
İzolasyon Sınıfı	H (180 °C)
Koruma Seviyesi	IP 44
Motor Gücü	30 - 750 W
Elektrik Girişi	1~230V AC ±%10 50 Hz PE
Nominal Akım	3.25 A
Motor Devri	4200 rpm (Max)
Pompa Ağırlığı	19 kg





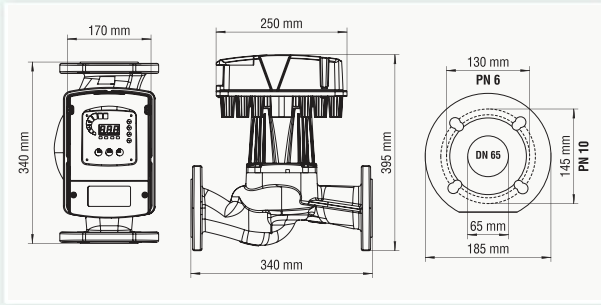
## SOM 65/130



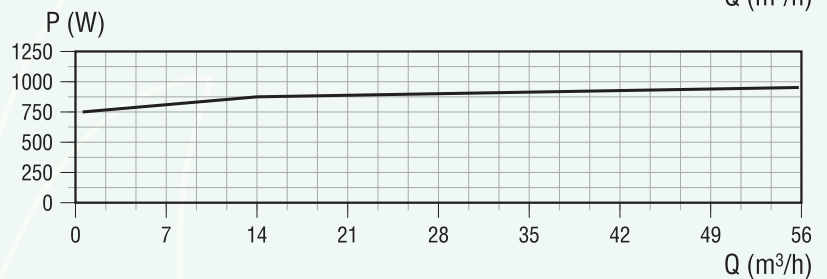
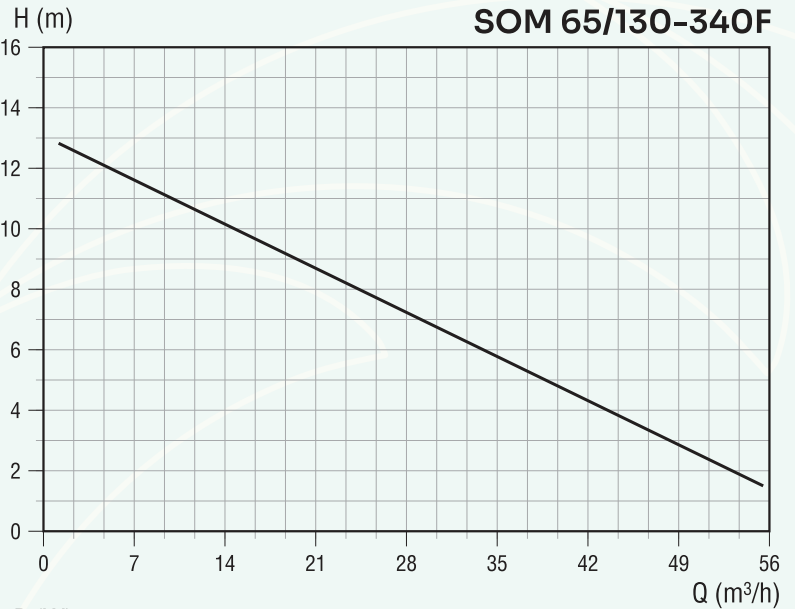
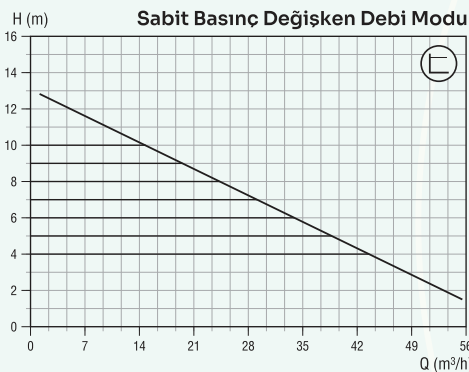
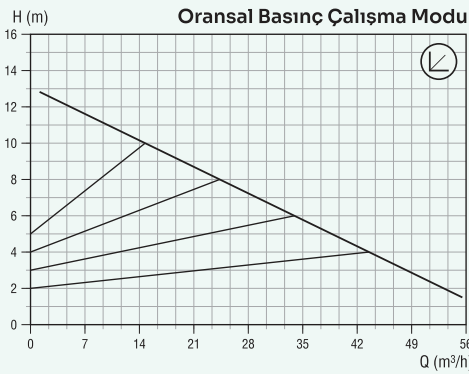
A+++

EEL ≤ 0.19

EN 16297-2-2013  
Part 2: Calculation  
of energy efficiency  
index (EEI) for  
standalone  
circulators.

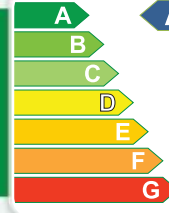


Kapasite	58 m <sup>3</sup> /h (Max)
Basma Yüksekliği	13 mss (Max)
Flaş Bağlantı Çapı	DN 65 - PN 6/10 Uyumlu
Montaj Yüksekliği	360 mm
Akışkan Sıvı Sıcaklığı	-10 °C / +110 °C
Ortam Sıcaklığı	0 °C / +40 °C
Sıcaklık Sınıfı	TF 110 °C / TS EN 16297-1
İzolasyon Sınıfı	H (180 °C)
Koruma Seviyesi	IP 44
Motor Gücü	80 - 850 W
Elektrik Girişi	1~230V AC ±%10 50 Hz PE
Nominal Akım	3.70 A
Motor Devri	4200 rpm (Max)
Pompa Ağırlığı	22.5 kg



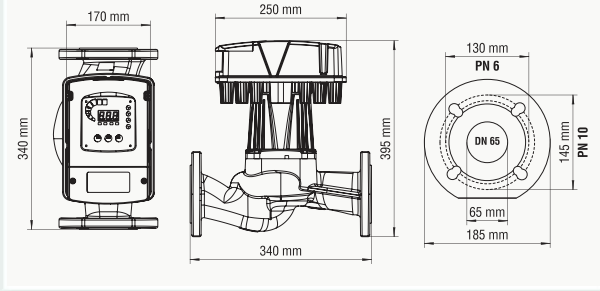


# SOM 65/160

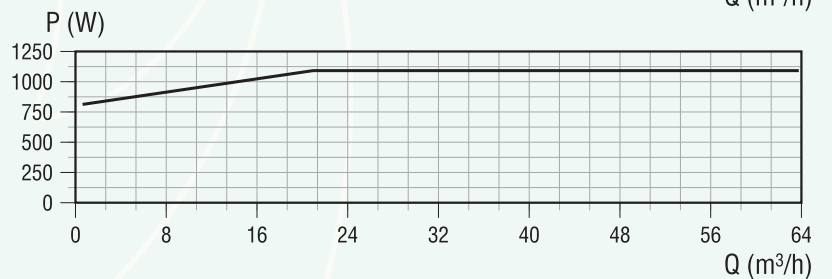
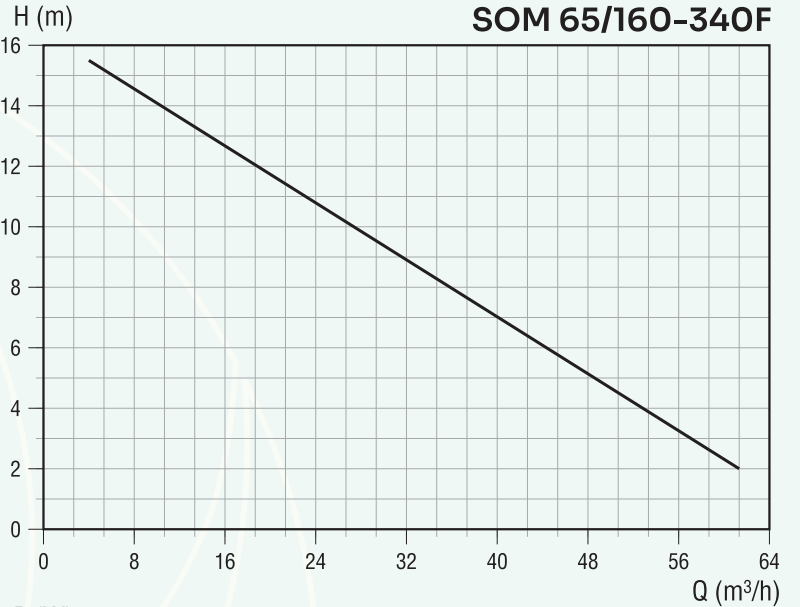
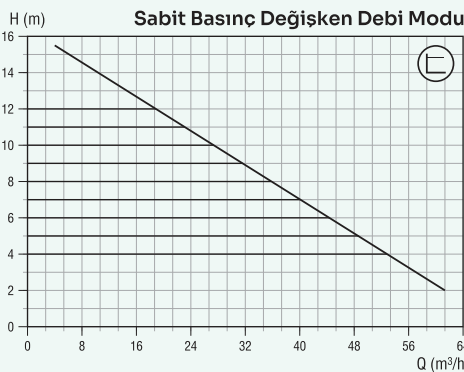
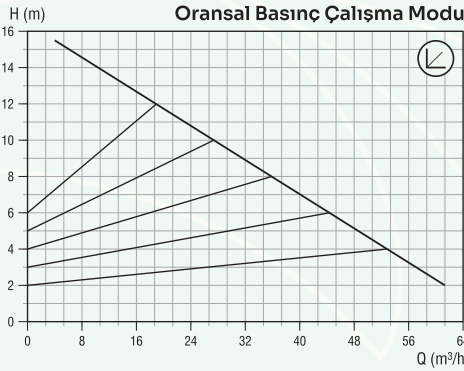


**EEL ≤ 0.19**

EN 16297-2-2013  
Part 2: Calculation  
of energy efficiency  
index (EEI) for  
standalone  
circulators.

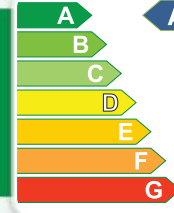


Kapasite	60 m <sup>3</sup> /h (Max)
Basma Yüksekliği	15.7 mss (Max)
Flaş Bağlantı Çapı	DN 65 - PN 6/10 Uyumlu
Montaj Yüksekliği	340 mm
Akışkan Sıvı Sıcaklığı	-10 °C / +110 °C
Ortam Sıcaklığı	0 °C / +40 °C
Sıcaklık Sınıfı	TF 110 °C / TS EN 16297-1
İzolasyon Sınıfı	H (180 °C)
Koruma Seviyesi	IP 44
Motor Gücü	80 - 1050 W
Elektrik Girişi	1~230V AC ±%10 50 Hz PE
Nominal Akım	4.60 A
Motor Devri	4700 rpm (Max)
Pompa Ağırlığı	22.5 kg





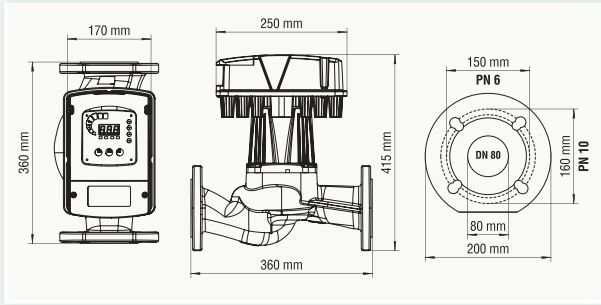
# SOM 80/80



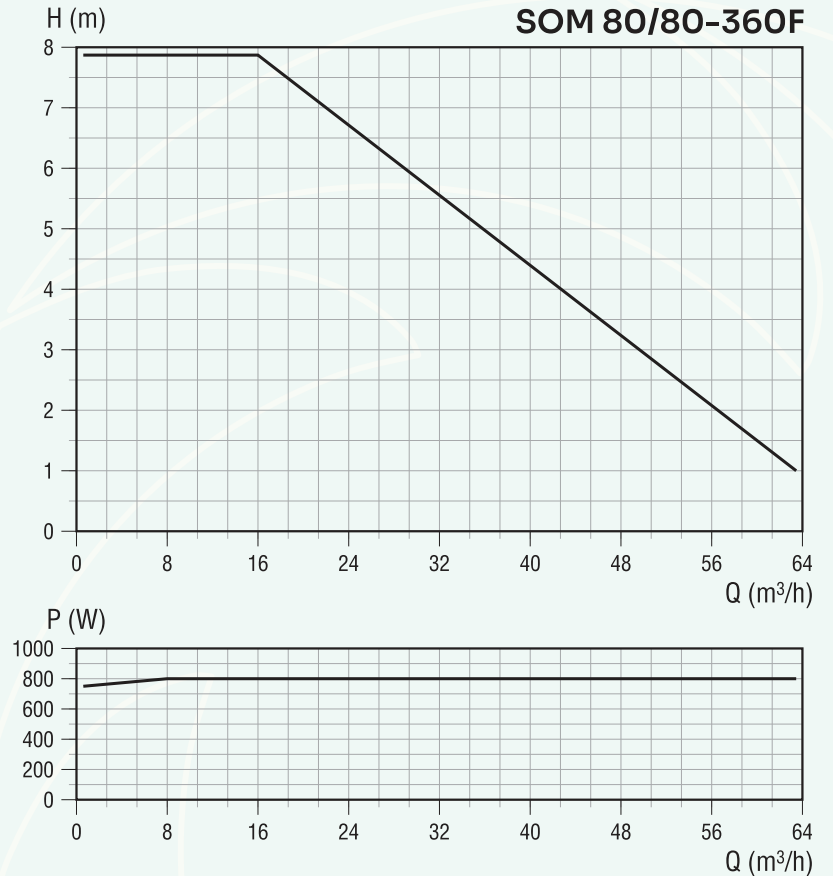
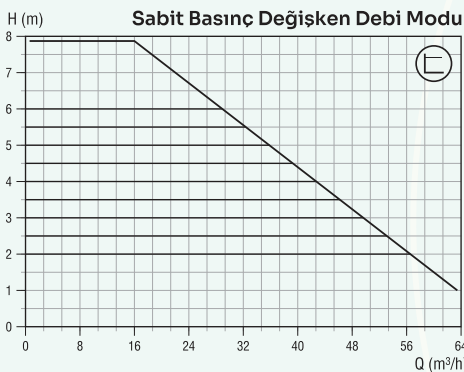
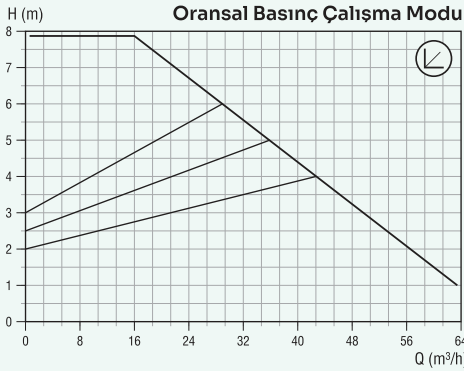
A+++

EEL ≤ 0.18

EN 16297-2-2013  
Part 2: Calculation  
of energy efficiency  
index (EEI) for  
standalone  
circulators.

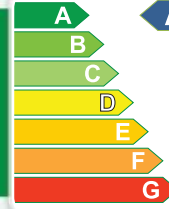


Kapasite	64 m <sup>3</sup> /h (Max)
Basma Yüksekliği	8.2 mss (Max)
Flaş Bağlantı Çapı	DN 80 - PN 6/10 Uyumlu
Montaj Yüksekliği	360 mm
Akışkan Sıvı Sıcaklığı	-10 °C / +110 °C
Ortam Sıcaklığı	0 °C / +40 °C
Sıcaklık Sınıfı	TF 110 °C / TS EN 16297-1
İzolasyon Sınıfı	H (180 °C)
Koruma Seviyesi	IP 44
Motor Gücü	80 - 800 W
Elektrik Girişi	1~230V AC ±%10 50 Hz PE
Nominal Akım	3.50 A
Motor Devri	3400 rpm (Max)
Pompa Ağırlığı	25 kg





# SOM 80/120

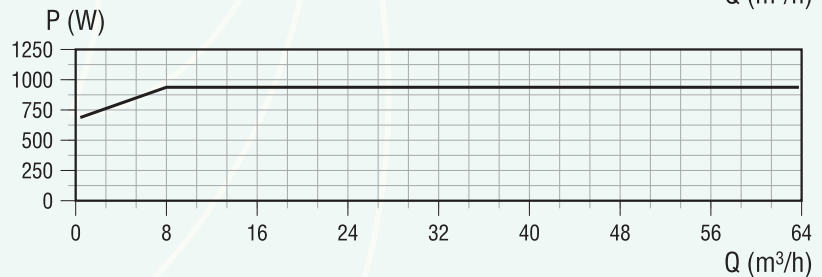
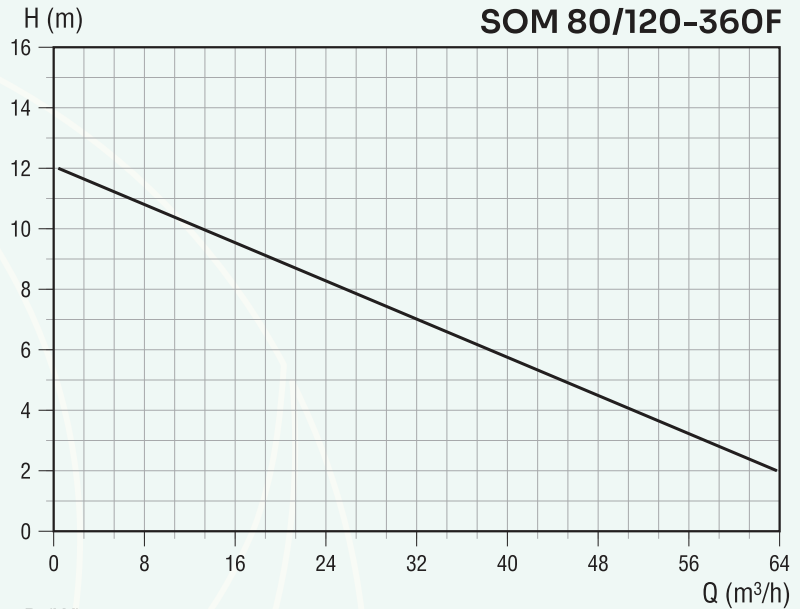
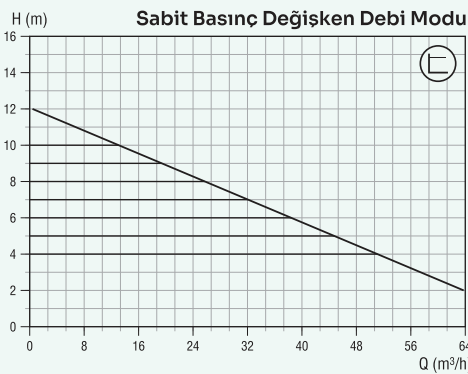
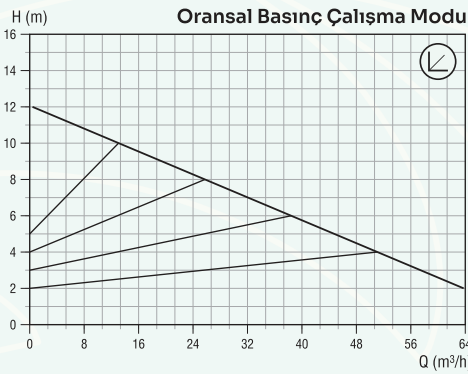
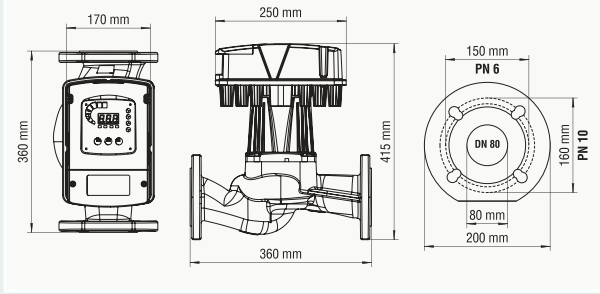


**EEL ≤ 0.18**

EN 16297-2-2013  
Part 2: Calculation  
of energy efficiency  
index (EEI) for  
standalone  
circulators.

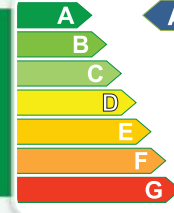


Kapasite	64 m <sup>3</sup> /h (Max)
Basma Yüksekliği	12 mss (Max)
Flaş Bağlantı Çapı	DN 80 - PN 6/10 Uyumlu
Montaj Yüksekliği	360 mm
Akışkan Sıvı Sıcaklığı	-10 °C / +110 °C
Ortam Sıcaklığı	0 °C / +40 °C
Sıcaklık Sınıfı	TF 110 °C / TS EN 16297-1
İzolasyon Sınıfı	H (180 °C)
Koruma Seviyesi	IP 44
Motor Gücü	80 - 950 W
Elektrik Girişi	1~230V AC ±%10 50 Hz PE
Nominal Akım	4.20 A
Motor Devri	3400 rpm (Max)
Pompa Ağırlığı	25 kg





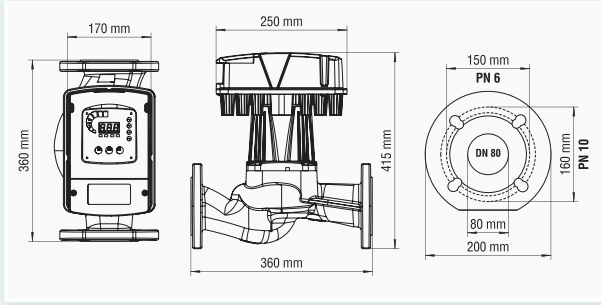
## SOM 80/130



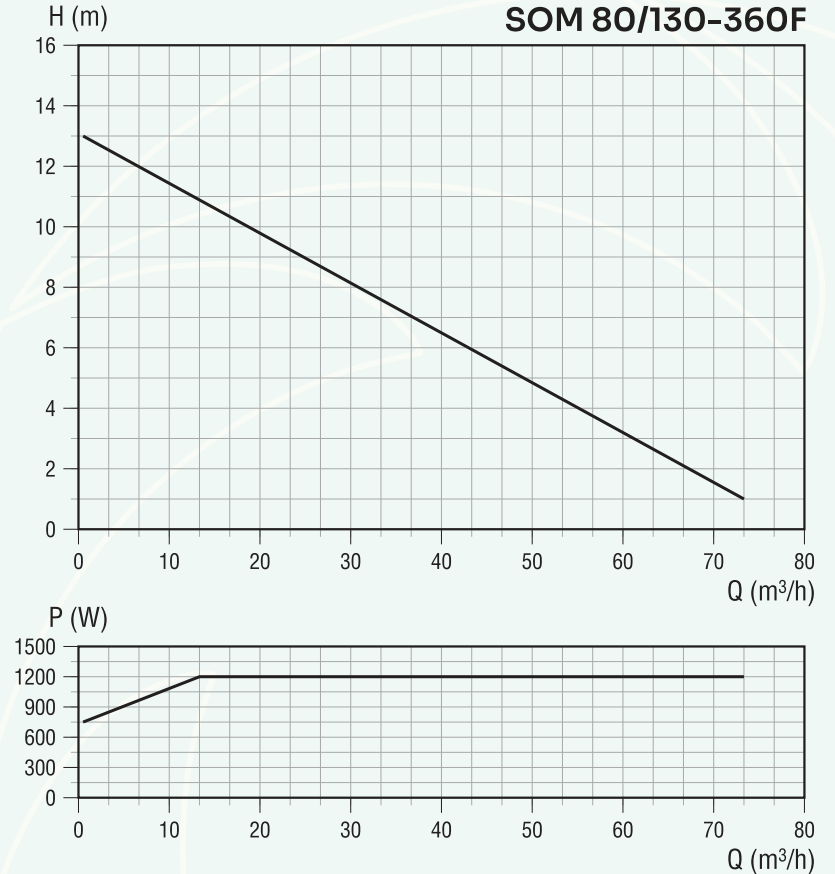
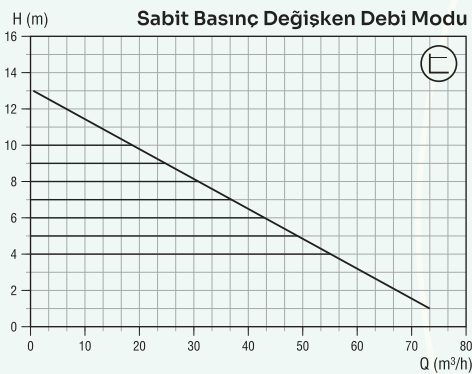
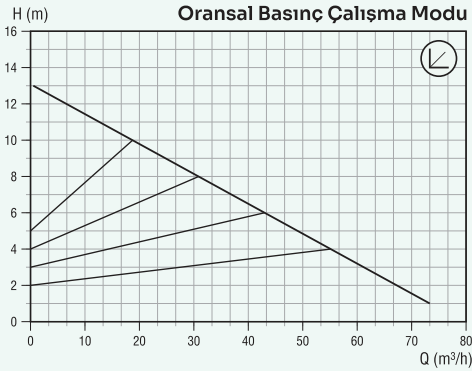
A+++

EEL ≤ 0.19

EN 16297-2-2013  
Part 2: Calculation  
of energy efficiency  
index (EEI) for  
standalone  
circulators.

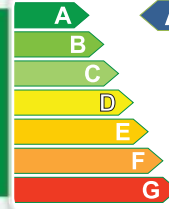


Kapasite	70 m <sup>3</sup> /h (Max)
Basma Yüksekliği	12.6 mss (Max)
Flanş Bağlantı Çapı	DN 80 - PN 6/10 Uyumlu
Montaj Yüksekliği	360 mm
Akışkan Sıvı Sıcaklığı	-10 °C / +110 °C
Ortam Sıcaklığı	0 °C / +40 °C
Sıcaklık Sınıfı	TF 110 °C / TS EN 16297-1
İzolasyon Sınıfı	H (180 °C)
Koruma Seviyesi	IP 44
Motor Gücü	80 - 1200 W
Elektrik Girişi	1~230V AC ±%10 50 Hz PE
Nominal Akım	5.25 A
Motor Devri	3450 rpm (Max)
Pompa Ağırlığı	25 kg





# SOM 100/120

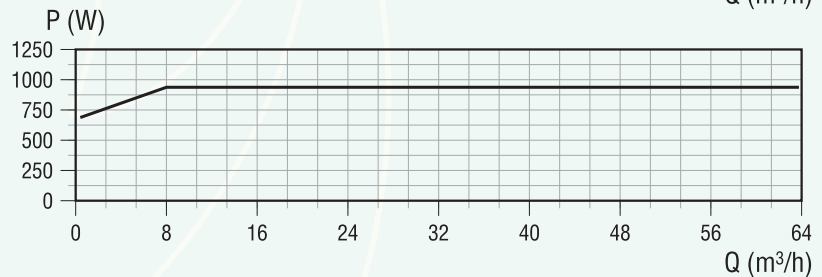
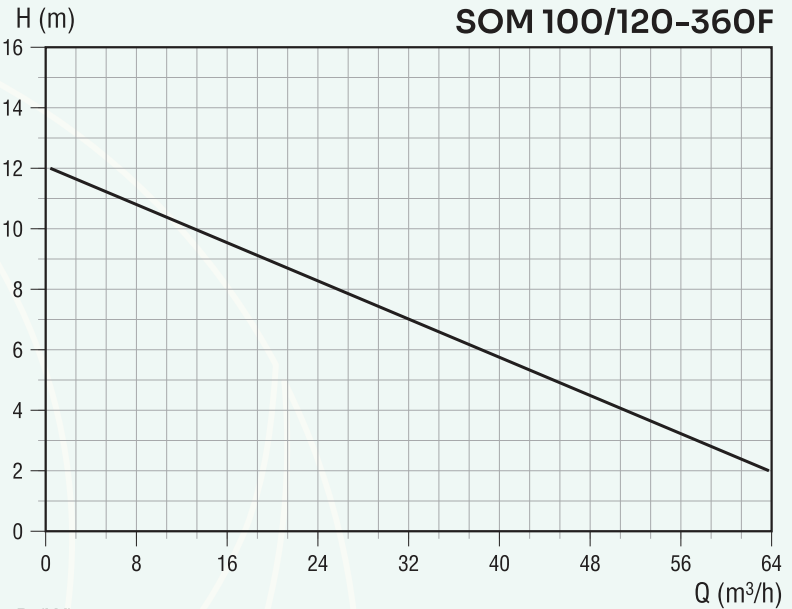
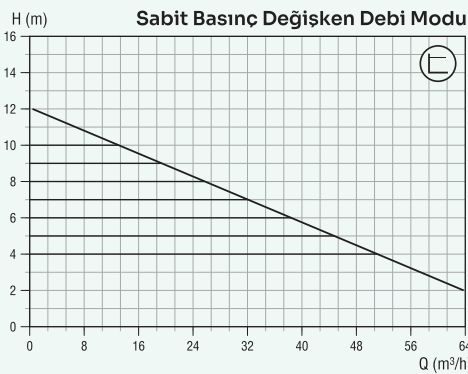
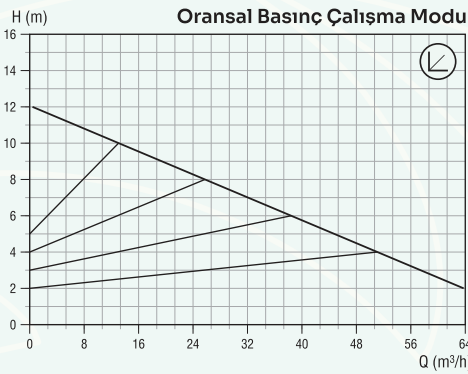
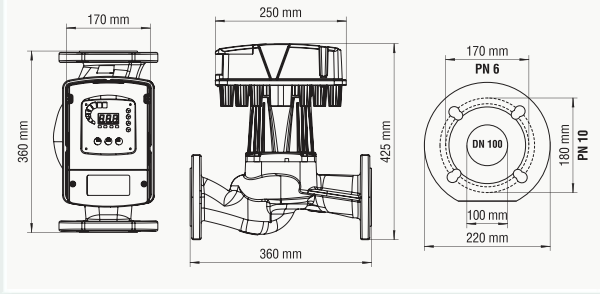


**EEL ≤ 0.18**

EN 16297-2-2013  
Part 2: Calculation  
of energy efficiency  
index (EEI) for  
standalone  
circulators.

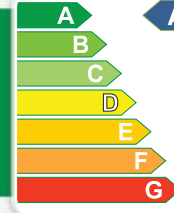


Kapasite	64 m <sup>3</sup> /h (Max)
Basma Yüksekliği	12 mss (Max)
Flaş Bağlantı Çapı	DN 100 - PN 6/10 Uyumlu
Montaj Yüksekliği	360 mm
Akışkan Sıvı Sıcaklığı	-10 °C / +110 °C
Ortam Sıcaklığı	0 °C / +40 °C
Sıcaklık Sınıfı	TF 110 °C / TS EN 16297-1
İzolasyon Sınıfı	H (180 °C)
Koruma Seviyesi	IP 44
Motor Gücü	80 - 950 W
Elektrik Girişi	1~230V AC ±%10 50 Hz PE
Nominal Akım	4.20 A
Motor Devri	3400 rpm (Max)
Pompa Ağırlığı	26 kg





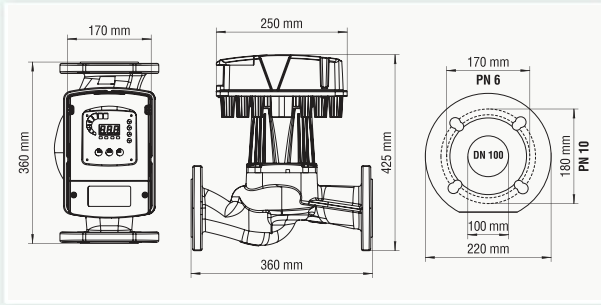
# SOM 100/130



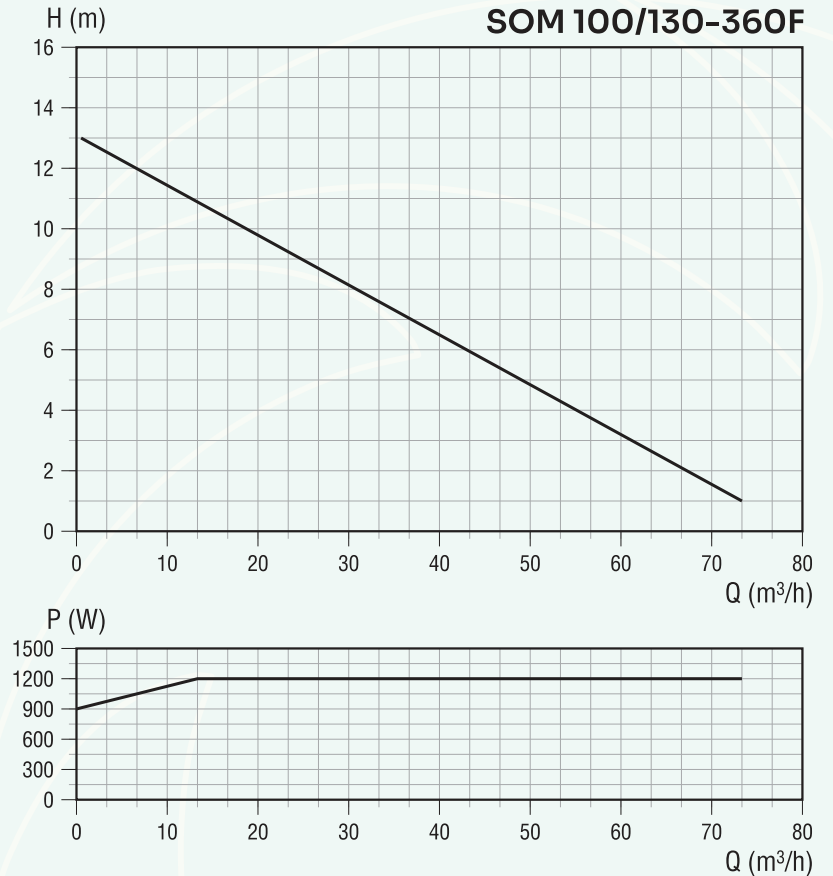
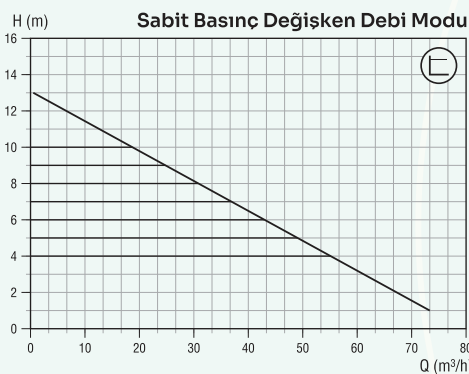
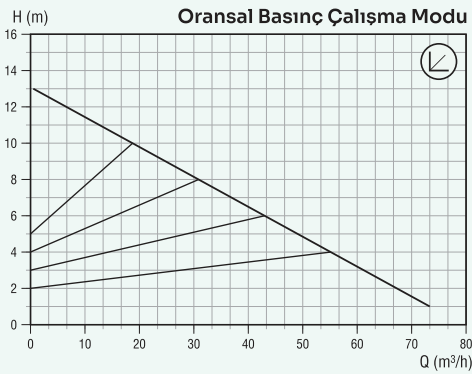
A+++

EEL ≤ 0.19

EN 16297-2-2013  
Part 2: Calculation  
of energy efficiency  
index (EEI) for  
standalone  
circulators.



Kapasite	70 m <sup>3</sup> /h (Max)
Basma Yüksekliği	12.6 mss (Max)
Flanş Bağlantı Çapı	DN 100 - PN 6/10 Uyumlu
Montaj Yüksekliği	360 mm
Akışkan Sıvı Sıcaklığı	-10 °C / +110 °C
Ortam Sıcaklığı	0 °C / +40 °C
Sıcaklık Sınıfı	TF 110 °C / TS EN 16297-1
İzolasyon Sınıfı	H (180 °C)
Koruma Seviyesi	IP 44
Motor Gücü	80 - 1200 W
Elektrik Girişi	1~230V AC ±%10 50 Hz PE
Nominal Akım	5.25 A
Motor Devri	3450 rpm (Max)
Pompa Ağırlığı	26 kg







“Suya Entegre Teknoloji”

ALTSORIM.ORG

**ASTRA GOLD PUMPS MAKİNA  
SANAYİ ve TİCARET LİMİTED ŞİRKETİ**



+90 216 312 00 77 Pbx  
+90 216 312 00 77



info@astragold.com.tr  
www.astragold.com.tr



Soğukpınar Mahallesi Şölen Sokak  
No:39/A Çekmeköy 34788 İstanbul / Türkiye



TS EN 16297-1  
TS EN 16297-2



9001:2015